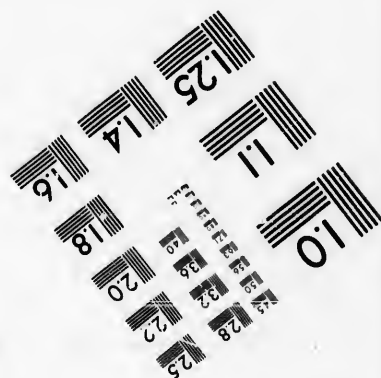
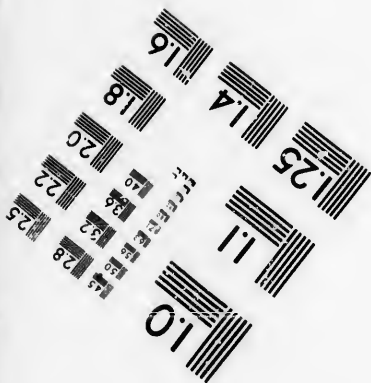
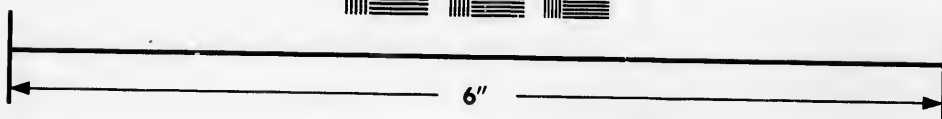
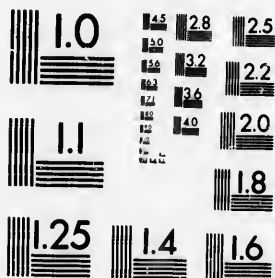


**IMAGE EVALUATION
TEST TARGET (MT-3)**



**Photographic
Sciences
Corporation**

23 WEST MAIN STREET
WEBSTER, N.Y. 14580
(716) 87-4503



**CIHM/ICMH
Microfiche
Series.**

**CIHM/ICMH
Collection de
microfiches.**



Canadian Institute for Historical Microreproductions / Institut canadien de microreproductions historiques



© 1986

Technical and Bibliographic Notes/Notes techniques et bibliographiques

The Institute has attempted to obtain the best original copy available for filming. Features of this copy which may be bibliographically unique, which may alter any of the images in the reproduction, or which may significantly change the usual method of filming, are checked below.

L'Institut a microfilmé le meilleur exemplaire qu'il lui a été possible de se procurer. Les détails de cet exemplaire qui sont peut-être uniques du point de vue bibliographique, qui peuvent modifier une image reproduite, ou qui peuvent exiger une modification dans la méthode normale de filmage sont indiqués ci-dessous.

- | | |
|--|--|
| <input checked="" type="checkbox"/> Coloured covers/
Couverture de couleur | <input type="checkbox"/> Coloured pages/
Pages de couleur |
| <input checked="" type="checkbox"/> Covers damaged/
Couverture endommagée | <input type="checkbox"/> Pages damaged/
Pages endommagées |
| <input type="checkbox"/> Covers restored and/or laminated/
Couverture restaurée et/ou pelliculée | <input type="checkbox"/> Pages restored and/or laminated/
Pages restaurées et/ou pelliculées |
| <input type="checkbox"/> Cover title missing/
Le titre de couverture manque | <input checked="" type="checkbox"/> Pages discoloured, stained or foxed/
Pages décolorées, tachetées ou piquées |
| <input type="checkbox"/> Coloured maps/
Cartes géographiques en couleur | <input type="checkbox"/> Pages detached/
Pages détachées |
| <input type="checkbox"/> Coloured ink (i.e. other than blue or black)/
Encre de couleur (i.e. autre que bleue ou noire) | <input checked="" type="checkbox"/> Showthrough/
Transparence |
| <input type="checkbox"/> Coloured plates and/or illustrations/
Planches et/ou illustrations en couleur | <input type="checkbox"/> Quality of print varies/
Qualité inégale de l'impression |
| <input type="checkbox"/> Bound with other material/
Relié avec d'autres documents | <input type="checkbox"/> Includes supplementary material/
Comprend du matériel supplémentaire |
| <input type="checkbox"/> Tight binding may cause shadows or distortion
along interior margin/
La reliure serrée peut causer de l'ombre ou de la
distorsion le long de la marge intérieure | <input type="checkbox"/> Only edition available/
Seule édition disponible |
| <input type="checkbox"/> Blank leaves added during restoration may
appear within the text. Whenever possible, these
have been omitted from filming/
Il se peut que certaines pages blanches ajoutées
lors d'une restauration apparaissent dans le texte,
mais, lorsque cela était possible, ces pages n'ont
pas été filmées. | <input type="checkbox"/> Pages wholly or partially obscured by errata
slips, tissues, etc., have been refilmed to
ensure the best possible image/
Les pages totalement ou partiellement
obscurcies par un feuillet d'errata, une pelure,
etc., ont été filmées à nouveau de façon à
obtenir la meilleure image possible. |
| <input type="checkbox"/> Additional comments:/
Commentaires supplémentaires: | |

This item is filmed at the reduction ratio checked below/
Ce document est filmé au taux de réduction indiqué ci-dessous.

10X	14X	18X	22X	26X	30X
<input type="checkbox"/>	<input type="checkbox"/>	<input checked="" type="checkbox"/>	<input type="checkbox"/>	<input type="checkbox"/>	<input type="checkbox"/>
12X	16X	20X	24X	28X	32X

The copy filmed here has been reproduced thanks to the generosity of:

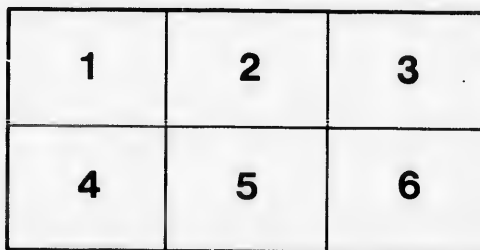
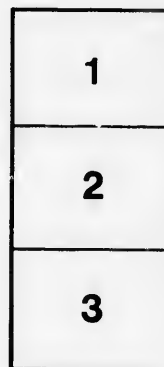
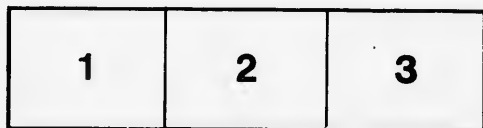
Library of the Public
Archives of Canada

The images appearing here are the best quality possible considering the condition and legibility of the original copy and in keeping with the filming contract specifications.

Original copies in printed paper covers are filmed beginning with the front cover and ending on the last page with a printed or illustrated impression, or the back cover when appropriate. All other original copies are filmed beginning on the first page with a printed or illustrated impression, and ending on the last page with a printed or illustrated impression.

The last recorded frame on each microfiche shall contain the symbol \rightarrow (meaning "CONTINUED"), or the symbol ∇ (meaning "END"), whichever applies.

Maps, plates, charts, etc., may be filmed at different reduction ratios. Those too large to be entirely included in one exposure are filmed beginning in the upper left hand corner, left to right and top to bottom, as many frames as required. The following diagrams illustrate the method:



L'exemplaire filmé fut reproduit grâce à la générosité de:

La bibliothèque des Archives
publiques du Canada

Les images suivantes ont été reproduites avec le plus grand soin, compte tenu de la condition et de la netteté de l'exemplaire filmé, et en conformité avec les conditions du contrat de filmage.

Les exemplaires originaux dont la couverture en papier est imprimée sont filmés en commençant par le premier plat et en terminant soit par la dernière page qui comporte une empreinte d'impression ou d'illustration, soit par le second plat, selon le cas. Tous les autres exemplaires originaux sont filmés en commençant par la première page qui comporte une empreinte d'impression ou d'illustration et en terminant par la dernière page qui comporte une telle empreinte.

Un des symboles suivants apparaîtra sur la dernière image de chaque microfiche, selon le cas: le symbole \rightarrow signifie "A SUIVRE", le symbole ∇ signifie "FIN".

Les cartes, planches, tableaux, etc., peuvent être filmés à des taux de réduction différents. Lorsque le document est trop grand pour être reproduit en un seul cliché, il est filmé à partir de l'angle supérieur gauche, de gauche à droite, et de haut en bas, en prenant le nombre d'images nécessaire. Les diagrammes suivants illustrent la méthode.

re
détails
es du
modifier
ar une
filmage

es

errata
to

pelure,
n à

32X

Handwritten text in a cursive script, likely a manuscript or ledger, running vertically along the right edge of the page. The text is partially obscured by a dark border on the right side of the image.

J. Lawrence

*J. W. Lawrence
Curator
& Collection*

**SYNOPSIS
OF
THE CONTENTS
OF
GESNER'S MUSEUM
OF
NATURAL HISTORY,**

**AT
SAINT JOHN, N. B.**

**OPENED ON THE FIFTH DAY OF APRIL,
1842.**

**SAINT JOHN:
PRINTED BY HENRY CHUBB, MARKET-SQUARE.
1842.**

Given Value \$4.00

SYNOPSIS

THE CONTENTS

GREENER'S MUSEUM

NATURAL HISTORY

SAINT JOHN, N. B.

PRINTED BY THE UNIVERSITY OF NEW BRUNSWICK

1912

SAINT JOHN, N. B.

UNIVERSITY OF NEW BRUNSWICK

1912

NA

C

P

SYNOPSIS
OF
THE CONTENTS
OF
GESNER'S MUSEUM
OF
NATURAL HISTORY,

AT
SAINT JOHN, N. B.

OPENED ON THE FIFTH DAY OF APRIL,

1842.

J. U. Lawrence

SAINT JOHN:

PRINTED BY HENRY CHUBB, MARKET-SQUARE.

1842.

1842
(16)

The
uplicate s
the name
source w
The
and, exc

N.
United S

Number.

1. Chl
2. Sam

4. Col
5. Sulp

SYNOPSIS, &c.

MINERALS.

The Minerals are chiefly contained in six glass cases. The duplicate specimens are deposited in the drawers. In this Synopsis the name of the Mineral is first given, then its locality, and lastly the source whence it was received, and sometimes remarks thereon.

The arrangement is according to the system of Professor Cleaveland, except in some of the specimens of different species.

N. B. denotes New Brunswick; N. S. Nova Scotia; U. S. United States.

CLASS I. ORDER II. GENUS III.

ALKALINE SALTS.

Number.

1. Chlorate of Soda. Wisconsin Territory. Professor Shepherd.
2. Same. Tobique River, N. B.

ORDER III. GENUS I.

EARTHY SALTS.

4. Columnar Sulphate of Barytes, or Witherite. England.
5. Sulphate of Barytes. Cornwall, England.

6.	Lamellar	Barytes.	Southampton, United States.
7.	Fibrous	do.	United States. Professor Emmons.
8.	Do.	do.	do. do.
9.	Compact	do. do.	Lake Champlain, Canada.
10.	Lamellar	do. do.	Cape Chignecto, N. S.
11.	Do.	do. do.	do. do.
12.	Do.	do. do.	do. do.
13.	Do.	do. do.	do. do.
14.	Do.	do. do.	do. do.
15.	Do.	do. do.	do. do.
16.	Compact	do. do.	do. do.
17.	Do.	do. do.	do. do.
18.	Do.	do. do.	do. do.
19.	Do.	do. do.	do. do.
20.	Do.	do. do.	with Green Carb. of Copper.
21.	Do.	do. do.	Lake Champlain.

GENUS II.

22.	Carbonate of Strontian.	New York.	Professor Emmons.
23.	Do.	do.	do. do.
24.	Do.	do.	do. do.
25.	Sulphate of Strontian.		
26.	Barystrontianite.	Schoharie, U. S.	
27.	Carb. Strontian.		
28.	Barystrontianite, with heavy spar.	Schoharie, U. S.	
29.	Barystrontianite.	Schoharie, U. S.	Professor Emmons.

GENUS III.

30.	Carbonate of Lime.	Isle Haut, N. S.
31.	Do.	do. Nova Scotia.
32.	Do.	do. Partridge Island, N. S.
33.	Double-refracting Spar	do. do. do.
34.	Do.	do. do. do.
35.	Carbonate of Lime, with specular Iron Ore.	Parrsboro', N. S.
36.	Flesh-red	do. Shediac, N. B.
37.	Do.	do. Crystals upon crystals. Partridge Island, N. S.
38.	Calcareous Spar.	N. B.
39.	Do.	do. on Stilbite. Partridge Island, N. S.
40.	Flesh-red	do. Guysboro, N. S.
41.	Red	do. do.
42.	Calcareous Spar.	St. Lawrence, Canada.
43.	Iceland Spar.	Iceland. Professor Emmons.
44.	Carbonate of Lime, with specular iron.	Parrsboro', N. S.
45.	Do.	do. with tremolite. Do. do.
46.	Iceland Spar.	N. S. Professor Emmons.
47.	Carbonate of Lime, on purple spar. with galena.	Lubec, U. S.
48.	Do.	do. with galena. Lubec, U. S.
49.	Carbonate of Lime.	Giant's Causeway, Ireland.
50.	Do.	do. Cornwall, England.
51.	Dolomite.	U. S. Professor Emmons.

States.
Professor Emmons.

do.
Canada.

6.

Copper.

Professor Emmons.

do.
do.

U. S.

Professor Emmons.

Parrsboro', N. S.

Partridge Island, N. S.

Partridge Island, N. S.

Parrsboro', N. S.

do.

U. S.

d.

62. Carbonate of Lime. Partridge Island, N. S.
63. Do. do. with stilbite on trap rock. P. Island, N. S.
64. Carbonate of Lime with stilbite on trap rock. Partridge Island.
65. Do. do. in amygdaloid. Partridge Island, N. S.
66. Do. do. do. do. do. do. do.
67. Do. do. lining fissures in trap rock. do. do.
68. Calc. Spar, with stilbite. Partridge Island, N. S.
69. Do. do. do. do. do.
70. Do. do. with laumontite. Peter's Point, N. S.
71. Carbonate of Lime. Blowmedon, N. S.
72. Do. do. on Quartz. N. S.
73. Do. do. another variety. N. S.
74. Do. do. do. N. S.
75. Calc. Spar, two varieties of crystals, shewing two periods of
of crystalization.
76. Arragonite. England. Viscount Valentia.
77. Do. Schoharie, U. S. Professor Emmons.
78. Do. do. do. do.
79. Do. do. do. do.
80. Fibrous Arragonite.
81. Arragonite. England.
Do. Knox Case. Albany, U. S.
82. Carbonate of Lime, with sulphuret of iron. Guysboro, N. S.
Do. do. do. do. Rev. W. Davies.
83. Satin Spar. Cornwall, England.
Do. U. S. Professor Emmons.
Do. do. do.
84. Hog-tooth Spar. McKay's Head, Parrsboro', N. S.
Do. do. Crane's Point, do. do.
Do. do. Guysboro, N. S. Rev. Wm. Davies.
Do. do. do. do. do. do.
85. Pearl Spar. Pennsylvania, U. S. W. Wagner.
86. Stalactite. Schoharie Cave, U. S. Professor Emmons.
Do. Pictou Cave, N. S.
Do. Musquash Harbour, N. B.
Do. Bermuda.
87. Calcareous Tufa. Professor Emmons.
88. Phosphate of Lime. England.
Do. do. U. S.
89. Fluuate of Lime. Cornwall.
Do. do. with crystals of quartz. Cornwall.
90. Fluuate of Lime. England.
Do. do. do. Cornwall.
Do. do. with galena. Cornwall.
91. Fluor Spar. U. S.
Do. with Galena. Cornwall.
92. Dolomite. U. S. W. Wagner.
93. Hog-tooth Spar. Giant's Causeway, Ireland.
94. Carbonate of Lime. Niagara.
95. Sulphurate of Lime. Pennsylvania. W. Wagner.
96. Fluuate of Lime. Connecticut, U. S.
97. Not determined, Musquash, N. B. with serpentine.

- | | | | | |
|------|------------------------------------|---------------------|----------------------------------|------|
| 103. | Tabular Spar. | Canada. | Professor Shepard. | 137. |
| 104. | Do. | do. | U. S. W. Wagner. | 138. |
| 105. | Sulphate of Lime. | Sussex Vale, N. B. | Forming daily in low grounds. | 139. |
| 106. | Do. | do. | do. | 140. |
| 107. | Single Crystals of do. | | | 141. |
| 108. | Sulphate of Lime, or Selenite. | Windsor, N. S. | | 142. |
| 109. | Do. | do. | South Carolina. | 143. |
| 110. | Fibrous Gypsum. | England. | | 144. |
| 111. | Do. | do. | Blowmedon, N. S. | 145. |
| 112. | Do. | do. | Windsor, N. S. | 146. |
| 113. | Do. | do. | in new red sandstone. | 147. |
| 114. | Do. | do. | in shale. | 148. |
| 115. | Sulphate of Lime. | Windsor. | | 149. |
| 116. | Sulphurate of Lime. | Pennsylvania, U. S. | W. Wagner. | 150. |
| 117. | Chlorophane. | New York, U. S. | | 151. |
| 118. | Fluate of Lime, with drusy quartz. | Cornwall. | | 152. |
| 119. | Calcareo Sulphate of Barytes. | St. Lawrence. | | 153. |
| 120. | Phosphate of Lime. | U. S. | | 154. |
| 121. | Apatite | Rossie. | St. Lawrence. Professor Shepard. | 155. |

GENUS IV.

MAGNESIA.

- | | | | | |
|------|------------------------------|--------------------------------------|---------------------|------|
| 122. | Carbonate of Magnesia. | Hoboken, N. Y., U. S. | | 156. |
| 123. | Silicate of Magnesia. | Hartford County, Maryland, Virginia. | Prof. Forman. | 157. |
| 124. | Magnesian Carbonate of Lime. | Baltimore. | Prof. Forman. | 158. |
| 125. | Carbonate of Magnesia. | Maryland, U. S. | W. Wagner. | 159. |
| 126. | Do. | do. | do. | 160. |
| 127. | Do. | do. | with quartz. Ditto. | 161. |
| 128. | Serpentine in crystals. | U. S. | Prof. Shepard. | 162. |

GENUS V.

- | | | | | |
|------|-------------------------------------|----------|--|------|
| 131. | Phosphate of Alumina, or Wavellite. | England. | | 163. |
|------|-------------------------------------|----------|--|------|

CLASS II.

EARTHY COMPOUNDS OR STONES.

- | | | | | |
|------|---------------------------------|-----------------------|-----|------|
| 134. | Limpid Quartz, or Rock Crystal. | Paradise River, N. S. | | 164. |
| 135. | Do. | do. | do. | 165. |
| 136. | Crystal of do. | do. | do. | 166. |

137. Smoky Quartz, or Cairngorm, one crystal weighing 33 pounds.
Paradise River, County of Annapolis, N. S.
133. Smoky Quartz, with Schorl. Do. do. do.
139. Quartz Crystals, with sulphuret of iron. Cornwall.
140. Crystallized Quartz. Blowmedon, N. S.
141. Do. do. with carbonate of lime. Ditto.
142. Do. do. living fissures in trap rock. Blowmedon.
143. Do. do. do. do. do.
144. Do. do. containing crystals of apophyllite. do.
145. Do. do. Parrsboro, N. S.
146. Drusy Quartz, on crystals of carb. lime. Blowmedon, N. S.
147. Do. do. French Cross, N. S.
148. Do. do. Partridge Island, N. S.
149. Do. do. do. do. do.
150. Crystallized Quartz, in geodes in trap rocks. Parrsboro, N. S.
151. Do. do. Musquash, N. B.
152. Limpid Quartz. New York. Professor Emmons.
153. Do. do. Allegany Mountains.
154. Do. do. Lancaster, N. B.
155. Black Quartz. Alston Moor, England.
156. Ferruginous Quartz. Blowmedon, N. S.
157. Crystallized Quartz, with Agate. Do. do.
158. Do. do. with Zeolite. Do. do.
159. Do. do. in Geodes. Do. do.
160. Do. do. Blowmedon, N. S.
161. Crystallized Quartz, Crystals, Crystals coated. Cape Sharp,
Parrsboro, N. S.
162. Lamellar do. do. do.
163. Red Quartz. N. S.
164. Rose Quartz. N. S.
165. Do. do. with Magnetic Iron Ore. Blowmedon, N. S.
166. Quartz, with Amethyst and Apophyllite. Do. N. S.
167. Amethystine Quartz.
168. Crystallized Quartz. Cornwall, England.
169. Do. do. with Stilbite. Blowmedon, N. S.
170. Do. do. with Calc. Spar and Heulandite.
171. Do. do. coated with Mag. Oxide of Iron.
172. Do. do. in Geodes in Red Jasper; the whole in
Sandstone changed by Trap.
173. Stalactical Quartz. Partridge Island, N. S.
174. Quartz Geodes. Blowmedon, N. S.
175. Milky Quartz. Theresa, New York. Professor Emmons.
176. Crystallized Quartz. Horton, N. S.
177. Quartz Geodes in Red Jasper. Blowmedon, N. S.
178. Do. do. in Trap Rock. Two Islands, Parrsboro, N. S.
179. Do. Crystallized. Giant's Causeway, Ireland.
180. Crystals of Quartz. U. S. Professor Emmons.
181. Yellow Quartz. Pittsfield, Mass. Professor Emmons.
182. Crystallized Quartz, with Mag. Oxide of Iron. Digby Neck,
N. S.
183. Flint. Dover, England.
184. Quartz, with Calc. Spar. Two Islands, Parrsboro, N. S.
185. Quartz. Blowmedon, N. S.

186.	Avanturine.	Cape Breton.	Rev. William Davies.		
187.	Do.	Do.	Do.		231
188.	Amethystine Quartz.	Cape Sharp,	Bay of Fundy.		232
189.	Amethystine Quartz.	Partridge Island,	N. S.		233
190.	Do.	do.	Crystals, coarct with Drusy Quartz.		234
			Cape Sharp, Bay of Fundy.		
191.	Amethystine Quartz.	Blowmedon,	N. S.		
192.	Do.	do.	Partridge Island, N. S.		
193.	Do.	do.	Blowmedon, N. S.		
194.	Do.	do.	in Agate. Blowmedon, N. S.		243
195.	Do.	do.	in Silicious Sinter. Swan Creek, N. S.		244
196.	Do.	do.	Blowmedon, N. S.		245
197.	Do.	do.	in Geodes. Blowmedon, N. S.		246
198.	Do.	do.	do.		247
199.	Drusy Quartz on Jasper.	Maryland,	U. S.		248
200.	Amethyst in Geodes.	Blowmedon,	N. S.		249
201.	Do.	do.	do.		250
202.	Do.	do.	Partridge Island, N. S.		251
203.	Do.	do.	Blowmedon, N. S.		252
204.	Do.	do.	do.		253
205.	Do.	do.	do.		
206.	Do.	do.	do.		
207.	Do.	do.	do.		
208.	Do.	do.	do.		
209.	Do.	do.	Partridge Island, Parrsboro', N. S.		
210.	Do.	do.	containing remains of insects, Blowmedon, N. S.		
211.	Do.	do.	Grand Manan, N. B.		
212.	Do.	do.	in Agate. Blowmedon, N. S.		
213.	Do.	do.	Swan Creek, Parrsboro', N. S.		257
214.	Do.	do.	McKay's Head, Parrsboro', N. S.		258
215.	Do.	do.	in Geodes. Blowmedon, N. S.		259
215.	Amethyst with Albite.				260
216.	Do.	with Apophyllite.	Blowmedon, N. S.		261
217.	Do.	with Stilbite.	Blowmedon, N. S.		262
218.	Do.	do.	do.		
219.	Do.	do.	Partridge Island, N. S.		
220.	Do.	with Heulandite.	Blowmedon, N. S.		263
221.	Do.	with Apophyllite.	Do.		264
222.	Do.	in scoriaceous matter.	Do.		265
223.	Do.	do.	do.		266
224.	Do.	do.	do.		267
225.	Chert.	Gaspe.			268
					269
					270
					271
					272
229.	Chrysoprase.				273
230.	Prase.	North Mountains,	N. S.		274
231.	Bloodstone, or Heliotrope.	Do. do.,	N. S.		275
					276
					277

Davies.
Fundy.
S.
h Drusy Quartz.

236. Catseye in veins. Partridge Island, N. S.
237. Do. in nodules. Blowmedon, N. S.
238. Do. Beaver Harbour, N. B.
239. Do. Partridge Island, N. S.
240. Do. Digby Neck, N. S.

S.
on, N. S.
Swan Creek, N. S.

243. Chalcedony. Tampa Bay, Florida. Professor Forman.
244. Do. crystalized. Berkshire County, U. S. Prof. Emmons.
245. Chalcedony. Mount Etna.
246. Do. common. Partridge Island. Parrsboro, N. S.
247. Botryoidal Cachalong. Two Islands. Parrsboro, N. S.
248. Cachalong. Blowmedon, N. S.
249. Do. do. do.
250. Do. Black Rock, King's County, N. S. This mineral appears to be decomposed horustone.
251. White Chalcedony. Maryland, U. S. W. Wagner.
252. Chalcedony. Eaton, Pennsylvania. Professor Forman.
253. Chalcedony. Surrey, England.

on, N. S.
do.

S.
Parrsboro', N. S.
Blowmedon, N. S.

257. Silicious Sinter, in geodes in Trap Rock. Parrsboro, N. S.
258. Do. do. do. do. do. do.
259. Do. do. do. do. do. do.
260. Glistening do. do. do. do. do.
261. Silicious Sinter. Blowmedon, N. S.
262. Do. do. crystalized, found lining a large open cavity in trap rock. Parrsboro, N. S.
263. Perfect hexaedral prisms and pyramids of do.
264. Silicious Sinter. Blowmedon, N. S.
265. Glistening do. Parrsboro, N. S.
266. Do. do. Red do. do.
267. Do. do. Blowmedon, N. S.
268. Do. do. Red in geodes in red jasper. N. S.
269. Do. do. Groups of crystals found lining a deep fissure in trap rock. Parrsboro, N. S.
270. Silicious Sinter, in groups of crystals. Parrsboro, N. S.
271. Do. do. with dog-tooth spar. do.
272. Do. do. with apophyllite. Blowmedon, N. S.
273. Michaelite. McKay's Head, Parrsboro.
274. Do. with crystals of S. Sinter. Do. do.
275. Do. do. do. do. do.
276. Do. do. with crystals of sinter and dog tooth spar. Do. do.
277. Brown glistening Sinter. McKay's Head, Parrsboro, N. S.

280. Precious Opal. Mexico.
 281. Do. do. Hungary.
 282. Semi-opal. Swan Creek, Parrsboro, N. S.
288. Hornstone. Chester, Pennsylvania, U. S.
 289. Do. Blowmedon, N. S.
 290. Do. Partridge Island, N. S.
 291. Agatized Wood. Antigua.
 292. Hornstone Pebbles. Gut Canso, N. S. Rev. Wm. Davies.
296. Red Ferruginous Jasper. Pittsfield, Mass., U. S. Professor Emmons.
 297. Red Jasper. Washademoac River, New Brunswick.
 298. Red Jasper. Parrsboro, N. S.
 299. Do. do. formed by the once heated trap rock in new red sandstone. Blowmedon, N. S.
 300. Yellow Jasper. Spencer's Island, Bay of Fundy.
 301. Do. do. with chalcedony. N. S.
 302. Do. do. Maryland, U. S. W. Wagner.
 303. Ribband Jasper. Jasper Head, Maine, U. S.
 304. Pebbles of do. Do. do. S. Thayer, Esq.
 305. Yellow Ribband Jasper. Peters' Point, N. S.
 306. Mottled Jasper. Partridge Island, N. S.
 307. Do. do. with amethyst. Do. do., N. S.
 308. Jasper. Ireland.
 309. Do. French Cross, N. S.
 310. Blue Jasper. Blowmedon, N. S.
 311. Mixed Jasper. Brier Island, N. S.
 312. Red Jasper. Cape Spencer, Bay of Fundy, N. S.
316. Fortification Agate, with Analcime and Calc. Spar. Blowmedon, N. S.
 317. Fortification Agate. Blowmedon, N. S.

318
 319
 320
 321
 322
 323
 324
 325
 326
 327
 328
 329
 330
 331
 332
 333
 334

 336
 337
 338

 340
 341

 345
 346
 347
 348
 349

 350
 351
 352
 353

 355

318. Fortification Bgate. Blowmedon, N. S.
 319. Do. do. Digby Neck, N. S.
 320. Do. do. with Onyx Agate.
 321. Fortification Agate. Blowmedon, N. S.
 322. Do. do. Partridge Island, N. S.
 323. Do. do. Horton Mountains, N. S.
 324. Moss Agate. Two Islands, Parrsboro, N. S.
 325. Do. do. Do. do. do.
 326. Do. do. Blowmedon, N. S.
 327. Do. do. Cornwall, England.
 328. Common Agate. Blowmedon, N. S.
 329. Do. do. Do. do.
 330. Do. do. Do. do.
 331. Dendritic Agate. Partridge Island, Parrsboro, N. S.
 332. Agate. Two Islands, Basin of Mines, N. S.
 333. Do. Do. do. do.
 334. Do. Washademoak, N. B.
336. Sardonix. Blowmedon, N. S.
 337. Onyx Agate. Blowmedon, N. S.
 338. Do. do. Italy.
340. Sapphire and Spinelle. New Jersey. Professor Emmons.
 341. Topaz. Brodbo, Sweden. Professor Shepard.
345. Corundrum. Uraline Mountains.
 346. Emery. United States. Professor Emmons.
 347. Black Spinelle. Amity, New York.
 348. Spinelle. Do. do.
 349. Fibrolite. United States. By some supposed to be the same
 as Silimanite or Bucholzite.
 350. Cyanite. Professor Emmons.
 351. Cyanite. New York.
 352. Staurotide. Connecticut, U. S. W. Wagner.
 352. Brucite and Spinelle. Amity County, Conn. Prof. Shepard.
 353. Kerolite or Dewyite. U. S. Yale College.
355. Kerolite or Dewyite. U. S.

Wm. Davies.

. S. Professor

wick.

in new red sand-

y.

r.

ayer, Esq.

S.

Spar. Blowme-

363. Gadolinite. Sweden. Professor Shepard.
365. Zircon in small Crystals. New York. Professor Emmons.
366. Zircon in Hornblende. New York. Professor Emmons.
368. Pumice. Etna.
369. Obsidian, with native Copper. Cape D'or, N. S.
370. Obsidian. Etna.
371. Spodumene in Albite. Massachusetts, U. S. Prof. Shepard.
372. Spodumene. Orange County, New York. Prof. Emmons.
373. Do. Tyrol, from Berlin, Prussia.
374. Petalite. Uton, Sweden. Professor Shepard.
375. Golden Mica. Rocky Mountains.
376. Mica. United States. Professor Emmons.
377. Do. Do. Do.
378. Do. New-Brunswick.
379. Silvery Mica. St. Lawrence, Canada.
380. Do. do. Wisconsin Territory.
381. Mica. United States. Professor Forman.
382. Do. Do. Professor Emmons.
383. Do. Connecticut, U. S.
384. Do. Green. U. S. Professor Forman.
385. Green Mica in Fluor Spar. Norway.
386. Leucite. Blowmedon, N. S. *Not analyzed.*
387. Do. Parrsboro', N. S. *Not analyzed.*
388. Fettstein. Norway. Professor Shepard.
390. Schorl. United States. Professor Shepard.
391. Do. New Hampshire, U. S.
392. Schorl. Cornwall, England.
393. Do. Massachusetts, U. S. Professor Emmons.
394. Tourmaline. Cornwall, England.
395. Schorl with Albite. Chester, Mass. U. S.
396. Indicolite in Albite. Massachusetts, U. S. Professor Shepard.
397. Black Tourmaline. Connecticut, U. S. Professor Shepard.
398. Feldspar. Sweden.
399. Do. Do.
400. Flesh Red Feldspar. Chester, N. S.
401. Do. do. Do. do.
402. Feldspar. United States.
403. Feldspar, with Amethyst. Switzerland.
404. Labrador Feldspar. Labrador.
405. Albite. Connecticut, United States. Yale College.
406. Do. United States.
407. Feldspar. Baltimore. Professor Forman.
408. Do. New-Brunswick.
409. Albite, with Black Tourmaline. Professor Shepard.

411.

412.

413.

414.

415.

416.

417.

418.

419.

425.

426.

427.

428.

429.

430.

431.

432.

435.

436.

437.

438.

439.

440.

446. A

447. G

449. Id

411. Chrysoberyl, Garnets and Crystals of Edurite. United States.
Professor Shepard.
412. Beryl. Italy.
413. Beryl. Connecticut, U. S.
414. Do. Do. do.
415. Chrysoberyl, Garnets, and Edurite. Professor Shepard.
416. Beryl. Munroe Canal, U. S. Yale College.
417. Iolite. Connecticut, U. S. Yale College.
418. Do. Do. do. do.
419. Do. Northwich, Conn. Professor Shepard.

425. Garnets with Cocolite. Schoharie, U. S.
426. Do. with Black Tourmaline. Professor Shepard.
427. Do. Connecticut, U. S. Professor Shepard.
428. Do. Nova Scotia.
429. Do. Italy.
430. Brown Trapezoidal Garnets. Sweden.
431. Brown Garnet. Connecticut, U. S. Professor Shepard.
433. Garnets with Black Tourmaline. Professor Shepard.

435. Epidote. Massachusetts, U. S. W. Wagner.
436. Do. Do. do. Professor Shepard.
437. Do. Connecticut, U. S.
438. Do. Do. do.
439. Do. Do. do.
440. Do. Do. do.

446. Apple green Idocrase. Berlin, Prussia.
447. Green Idocrase. (To be examined.)
449. Idocrase, (Haüy.) Vesuvian, (Werner,) Vesuvius.

449. Apple green Idocrase. Germany. 494.
 450. Phrenite. Black Rock, Nova Scotia. 495.
 496.
 497.
 498.
 499.
 500.
 501.
 502.
 503.
 504.
 505.
 507.
 508.
 509.
 510.
 511.
 514.
 515.
 516.
 517.
 518.
 519.
 520.
 521.
 522.
 523.
 524.
 530.
 531.
 532.
 533.
 534.
 535.
457. Stilbite. P. Island, N. S.
 458. Do. Blowmedon, N. S.
 459. Do. do. do.
 460. Do. Swan Creek, Parrsboro, N. S.
 461. Stilbite. Blowmedon, do.
 462. Straw coloured do. Swan Creek, N. S.
 463. Stilbite. Two Islands, Parrsboro, N. S.
 464. Do. McKay's Head, Parrsboro, N. S.
 465. White do. in altered red sandstone. Swan Creek, N. S.
 466. White Stilbite. Swan Creek, N. S.
 467. Stilbite, with calcareous spar. P. Island, N. S.
 468. Do. do. do.
 469. Do. do. do.
 470. Do. in veins in trap. P. Island, N. S.
 471. Do. with calc. spar and red heulandite. P. Island, N. S.
 472. Do. do. do. do.
 473. Do. with hog-tooth spar. P. Island, N. S.
 474. Brown Stilbite, with carb. of lime.
 475. White Stilbite. Blowmedon, N. S.
 476. Straw coloured Stilbite, with flesh red Chabasie. Swan Creek,
 Nova Scotia.
 477. Straw coloured Stilbite, with pearly Heulandite.
 478. Stilbite and Heulandite. Blowmedon, N. S.
 479. Stilbite with Heulandite.
 480. Do. with Laumonite. Blowmedon, N. S.
 481. Do. in Fasciuli. Peters' Point, N. S.
 482. Stilbite in tabular crystals. Blowmedon, N. S.
 483. White in do. do. Black Rock, N. S.
 484. Zeolite. Cape D'or, N. S.
 485. Do. do. do.
 486. Fibrous Mesotype, or Zeolite. Cape D'or.
 487. Mealy Zeolite of (Jamieson) Isle Haut.
 488. Natrolite. (Jamieson.) Isle Haut.
 489. Do. with Chabasie. Cape D'or.
 490. Fibrous Mesotype. Blowmedon, N. S.
 491. Do. do. Isle Haut, N. S.
 492. Do. do. with Analcime. Cape D'or.
 493. Thompsonite. Blowmedon, N. S.

494. Thompsonite. Cape D'or.
 495. Do. with another variety of zeolite. Cape D'or.
 496. Needle-stone. Swan Creek, N. S.
 497. Do. Blowmedon.
 498. Do. with analcime. Swan Creek.
 499. Do. with do. Blowmedon.
 500. Do. with chabasie and apophyllite.
 501. Do. with chabasie and Thompsonite.
 502. Do. with apophyllite. Chute's Cove.
 503. Hairstone. Swan Creek, N. S.
 504. Laumonite. Black Rock, Cornwallis, N. S.
 505. Do. Stronyx's Brook, N. S.

507. Do. with amygdaloid. Black Rock, N. S.
 508. Laumonite, with green carb. copper. Cape D'or.
 509. Do. with calcareous spar. Cape D'or, N. S.
 510. Thompsonite. Giant's Causeway. Ireland.
 511. Foliated Zeolith. (Jamieson.) Red Stilbite. Tyrol.

514. Analcime. Swan Creek, N. S.
 515. Do. Blowmedon, N. S.
 516. Do. Isle Haut.
 517. Do. on crystals of Apophyllite. Blowmedon.
 518. Transparent Analcime. Swan Creek, N. S.
 519. Do. do. with fine crystals of another mineral, not yet analyzed. Blowmedon.
 520. Analcime, with fascicular stilbite. Swan Creek.
 521. Do. with specular iron ore and tremolite. Clarke's Head, Nova Scotia.
 522. Sarcolite. Blowmedon, N. S.
 523. Not analyzed. Blowmedon.
 524. Not analyzed. Blowmedon.

530. Chabasie, in Geodes. Swan Creek, N. S.
 531. Do. lining fissures in trap. McKay's Head, N. S.
 532. Do. do. do. do. Swan Creek.
 533. Chabasie. Swan Creek, N. S.
 534. Flesh red do. Swan Creek, N. S.
 535. do. do. with hog-tooth spar. Swan Creek.

536. Chabasie, with Heulandite. Swan Creek.
 537. Chabasie, with Stilbite. do.
 538. Chabasie, with green Carb. Copper. Cape D'or.

555. Heulandite. Blowmedon.
 556. Do. Swan Creek, N. S.
 557. Red Heulandite. Black Rock and Peters' Point, N. S.
 558. Brown Heulandite. Swan Creek, N. S.
 559. Heulandite, with hog-tooth Spar. Swan Creek.
 560. Heulandite, with silicious Sinter. McKay's Head, N. S.
 561. Do. with Amethyst. Blowmedon.
 562. Do. with Green Carb. Copper. Cape D'or.
 563. Do. with Analcime.
 564. Do. with Specular Oxide of Iron. Blowmedon.
 565. Do. with Sulbite. Swan Creek, N. S.
 567. Do. lining cavities in Amygdaloid. Black Rock, N. S.

575. Apophyllite with Stilbite. Blowmedon, N. S.
 576. Do. Cape D'or.
 577. Do. do.
 578. Do. with Thompsonite. Cape D'or.

579.
580.

581.
582.

89. T
90.
91.
92. B
93. T
94.
95.
96. F

00. As
01.
02.
03.
04.
05. Lig
06. An

9. Am

. Aug
. Aug
. Pyro
. Pyro

. Fass
. Cocc

Horn
D
D

579. Apophyllite. Isle Haut, N. S.
 580. Do. Blowmedon. (*Not decided upon by several Mineralogists. To be analyzed.*)
 581. Do. with Albin. Cape D'or. Mrs. J. Ratchford.
 582. Do. with specular Iron. Blowmedon.

589. Tremolite. Amity, New York. Professor Emmons.
 590. Do. Berkshire County, Mass. Professor Emmons.
 591. Do. Baltimore. Professor Forman.
 592. Bladed Tremolite in Dolomite. Professor Emmons.
 593. Tremolite. Clarke's Head, Parrsboro, N. S.
 594. Do. with specular Oxide of Iron. Do. do.
 595. Do. with Carb. Lime. Clarke's Head, N. S.
 596. Fibrous Tremolite. Chester, Pennsylvania, U. S.

597. Asbestos. United States. W. Wagner.
 598. Do. Do. Do.
 599. Do. Martin's Head, New Brunswick.
 600. Do. N. B.
 601. Do. Baltimore. Professor Forman.
 602. Ligneous Do. Chester, Pennsylvania, U. S. W. Wagner.
 603. Amianthus. Parrsboro', N. S.

604. Amianthoide. Sweden.

605. Augite. Essex County, New York. Professor Emmons.
 606. Augite, with specular Oxide of Iron. Parrsboro', N. S.
 607. Pyroxene and Ruballine. Bohemia.
 608. Pyroxene, or Malacolite. Fahlen, Sweden.

609. Fassaite. England.
 610. Cocolite. Schoharie, United States. Professor Emmons.

611. Hornblende. Germany.
 612. Do. Hammond River, New Brunz.
 613. Do. (decomposed.) Baltimore.

627. Hornblende. Hammond River, New Brunswick.
630. Actynolite. Sweden.
 631. Do. Germany.
 632. Radiated Actynolite. Chester, Massachusetts. W. Wagner.
 633. Anthophyllite. Professor Shepard.
635. Magnesite. Dowd's Cove, New Brunswick.
 636. Magnesite, with Chlorite.
640. Common Serpentine. United States.
 641. Brown Serpentine. Middlefield. Professor Emmons.
 642. Do. Schoharie, U. S. Professor Emmons.
 643. Compact Serpentine. England.
645. Serpentine. Parrsboro', Nova Scotia.
650. Talc. United States.
 651. Talc. Baltimore. Professor Forman.
 652. Do. Vermont. Yale College.
 653. Green Talc. Hartz Mountains.
 654. Green Talc.
 655. Talc. Buck's Harbour, Maine, U. S.
 656. Do. Hartz Mountains.
658. Steatite, or Soapstone. Near Baltimore. Professor Forman.
 659. Do. do.
664. Chlorite. Grand Manan, New Brunswick.
 665. Chlorite. Clarke's Head, Parrsboro'.
 666. Do. with Pyroxene. Clarke's Head, Parrsboro'.
 667. — Not analyzed. From do. do.
 668. Chlorite, with octaedral mag. Oxide of Iron. Maryland.
 669. Green Chlorite. Russia.
 670. Do. on Crystals of Quartz. Black River, N.
673. Argillaceous Slate.

675. C

677. S

678. B

680. I

681. I

88. R

90. As

91. Sil

92. Pl

93. H

94. Co

95. Bl

96. Sil

97. Ke

98. Bl

99. Ce

100. Mo

101. By

102. Cal

103. Epi

104. No

105. Do.

106. Act

107. Chl

108. Sill

109. Coc

110. Lep

111. Cele

112. Nul

113. Aut

114. Rut

115. Chr

116. Rens

117. With

118. Spod

119. Bary

Sulp

- 675. Clay Slate. New Brunswick.
- 677. Shale. Bathurst, New Brunswick.
- 678. Bituminous Shale. Westmorland, New Brunswick.
- 680. Indurated Clay. Woodstock, New Brunswick.
- 681. Indurated or Burnt Clay. Bohemia. Professor Shepard.
- 688. Reddle. Spencer's Island, Nova Scotia.

APPENDIX TO CLASS II.

Emmons.
essor Emmons.

Professor Forman

d, Parrisboro'.
do.
on. Maryland,
Black River, N.

- 90. Asparagus Stone. Cabo de Gate. Spain.
- 91. Sillimanite. Chester, Connecticut. Professor Shepard.
- 92. Plagionite, (Rossilite.) Hartz Mountains. Do. do.
- 93. Haydenite. Baltimore. Professor Forman.
- 94. Columbite. Middletown, Connecticut.
- 95. Blue Spinelle. Sweden. Professor Shepard.
- 96. Sillimanite. Chester, Connecticut. Professor Shepard.
- 97. Keyhite. Pennsylvania. W. Wagner.
- 98. Blue Calcareous Spar. New York.
- 99. Cerite, (contains a new metal, Lautarium.) Sweden.
- 100. Monazite, Edwardsite, with Sillimanite.
- 101. Byrete calcine with Hornblende. Alston Moore, England.
- 102. Calcareous Sulphate of Barytes. St. Lawrence.
- 103. Epidote and Chlorite. Norwich, Connecticut, U. S.
- 104. *Not analyzed.* Hartz Mountains.
- 105. Do. do. United States.
- 106. Actynolite. Sweden.
- 107. Chlorophæite. Nova Scotia.
- 108. Sillimanite. Chester, Connecticut. Professor Shepard.
- 109. Cocolite. New Jersey. W. Wagner.
- 110. Leptonite. United States. Professor Forman.
- 111. Celestine, or Sulphate of Strontian. Sicily.
- 112. Nulalite, or Scapolite. St. Lawrence, N. Y. Prof. Shepard.
- 113. Automalite. Fahlen, Sweden. Professor Shepard.
- 114. Rutile. Lancaster, Pennsylvania. Professor Shepard.
- 115. Chrichtonite. Litchfield, Connecticut. Professor Shepard.
- 116. Rensalaerite. Saint Lawrence. Professor Shepard.
- 117. Witherite, or Carb. Barytes. Alston Moor, Cumberland.
- 118. Spodumene. Tyrol. Professor Shepard.
- 119. Baryte Calcite. Alston Moor, Cumberland.

CLASS III. COMBUSTIBLES.

- Sulphur, with Sulphate of Lime. Etna.

722. Bitumen. Westmorland, New Brunswick.

724. Amber—Franconia, (containing insects.)

727. Anthracite. Pennsylvania.

728. Peacock Anthracite. Pennsylvania. Professor Shepard.

729. Pavonine Anthracite. Schuylkill, United States.

730. Graphite. Hammond River, New Brunswick.

731. Do. Ceylon. Captain Ruel.

732. Do. England.

733. Do. Saint John, New Brunswick.

736. Coal, common. Newcastle.

737. Do. Cannel. Scotland.

738. Cannel Coal. Westmorland, New Brunswick.

739. Coal, common. Westmorland, New Brunswick.

740. Coal. Miramichi.

745. Lignite. Grindstone Island, New Brunswick.

746. Lignite. Joggins, Nova Scotia.

747. Lignite. Quaco, New Brunswick.

750. Jet. Pictou, Nova Scotia.

CLASS IV. ORES.

760. Native Gold, with Earthy Sulphuret of Silver. Mexico.

761. Native Gold. North Carolina. W. Wagner.

GENUS V.

771. Native Silver. Africa. Mr. Morrow.

772. Do. Do. Do.

773. S
774.
775.
776. S

784. S
785. C
786.

794. N
795.
796.
797.
798.
799. Na

805. Sul
806.
807. Pyr
808. Gre
809. Pyr

12. } Gra
13. }
14. Cop
15.
16. Gray
17. Cop
18. Rub
19. Do
20. Blue
21. Do
22. Mal
23. Vitro
24. Gree
25.
26.
27. Red

773. Sulphuret of Silver. Mexico.
 774. Do. Do. Do.
 775. Do. Do. Sierra Leone.
 776. Sulphuret of Silver, brittle and earthy. Mexico.

GENUS VI.

784. Sulphuret of Mercury.
 785. Cinnabar. South America.
 786. Do. Do.

GENUS VII.

794. Native Copper. Cape D'or.
 795. Do. do. in Quartz veins. Cape D'or.
 796. Do. do. Cape D'or.
 797. Do. do. in Trap rock. Cape D'or.
 798. Do. do. with Calcareous Spar. Do.
 799. Native Copper. Cornwall, England.
805. Sulphuret of Copper. Cornwall, England.
 806. Do. with Quartz do. Cornwall, England.
 807. Pyritous Copper.
 808. Green Malachite. Cornwall, England.
 809. Pyritous Copper. Michigan Territory, United States.
12. }
 13. } Gray Copper Ore. Carriboo River, Pictou, Nova Scotia.
 14. } Copper Ore in Lignite by infiltration. Carriboo River, N. S.
 15. } Do. do. do. do.
 16. } Gray Copper Ore in Lignite. Carriboo River, Pictou.
 17. } Copper Ore in Lignite. Bathurst, New Brunswick.
 18. } Ruby Copper. Cornwall, England.
 19. } Do. do. do.
 20. } Blue Carbonate of Copper. Cornwall, England.
 21. } Do. do. do. do.
 22. } Malachite. Cornwall, England.
 23. } Vitreous Copper Ore. Cornwall, England.
 24. } Green Carb. Copper in Lignite by infiltration. Pictou, N. S.
 25. } Do. with Chabasic. Cape D'or.
 26. } Do. Cape D'or.
 27. } Red Oxide of Copper, with Native Copper. Cape D'or.

828.	Hydro Carbonate of Copper.	Cornwall, England.	830.
829.	Blue Sulphate of Copper.	Cornwall, England.	831.
830.	Arseniate of Copper,	Cornwall, England.	832.
831.	White do.	do. do. do.	833.
832.	Arseniate Copper.	Cornwall, England.	834.
833.	Vitreous Copper Ore.	Cornwall, England.	835.
834.	Sulphuret of Copper in Quartz.	Blowmedon, Nova Scotia.	836.
835.	Gray Copper Ore.	Cornwall, England.	837.
836.	Crystallized Copper, containing Silver.	Cornwall, England.	838.
837.	Sulphuret of Copper.	Digdeguash, New Brunswick.	839.
838.	Do.	do. do. do.	840.
839.	Copper Ore.	Digdeguash, New Brunswick.	841.
840.	Do. do.	with Quartz. Cornwall, England.	
841.	Arseniate of Copper.	Cornwall, England.	

GENUS VIII. IRON.

849.	Iron Pyrites.	Cornwall, England.	900.
850.	Sulphuret of Iron.	Campo Bello, New Brunswick.	901.
851.	Do.	do. with Quartz. Do. do.	902.
852.	Do.	do. Rocky Mountains, United States.	903.
853.	Do.	do. crystallized. Cornwall, England.	904.
854.	Crystals of do.	Parrsboro', Nova Scotia.	905.
855.	Cubic Crystal of do.	Shubenecadie Canal, Nova Scotia.	906.
856.	Botryoidal.	United States.	907.
857.	Yellow Iron Pyrites.	Sweden.	908.
858.	Yellow Pyrites.	Hartz Mountains.	909.
859.	Do. Do.	Balls, in Clay Slate. St. John, N. B.	910.
860.	Iron Pyrites.	Charlotte County, N. B.	911.
861.	Sulphate of Iron.	Wilmot Spring, N. S.	912.
862.	Sulphuret of Iron.	Schoharie. United States. Prof. E. M. M.	913.
863.	Cubic Sulphuret of Iron.	Hartz Mountains.	914.
865.	Magnetic Oxide of Iron.	Digby Neck.	915.
868.	Magnetic Oxide of Iron.	Blowmedon, N. S.	916.
869.	Do.	Do. Do. Crystallized. Digby Neck.	917.
870.	Do.	Do. Do. Blowmedon.	918.
871.	Do.	Do. Do. with Red Jasper. Blowmedon.	919.
872.	Do.	Do. Do. with Grey Copper Ore. Blowmedon.	920.
873.	Do.	Do. Do. with Carbonate of Copper. Blowmedon.	921.
874.	Iron Sand.	Isle Sable.	922.
875.	Iron Sand, with Iserine.	Petitcodiac.	923.
876.	Magnetic Oxide of Iron, with Iserine.	Bull Moose Hill.	924.
877.	Specular Oxide of Iron.	Digby Neck, N. S.	925.
878.	Specular Oxide of Iron.	Digby Neck, N. S.	926.
879.	Crystalline Do.	Do. Do.	927.

- England.
England.
d.
d.
don, Nova Scotia.
Cornwall, England.
Brunswick.
do.
ck.
England.
l.
Brunswick.
do.
United States.
all, England.
tia.
al, Nova Scotia.
t. John, N. B.
ates. Prof. Emmons.
ins.
S.
by Neck.
Blowmedon.
Ore. Blowmedon.
Copper. Blowmedon.
ull Moose Hill.
S.
S.
Do.
830. Specular Oxide of Iron. Cornwall.
831. Do. Do. Lubec, Maine.
832. Do. Do. Dowd's Cove, N. B.
833. Do. Do. Do. Do.
834. Do. Do. with Magnesite. Do. Do.
835. Micaceous Oxide of Iron. Guysboro', N. S.
836. Do. Do. Sweden.
837. Do. Do. New-Brunswick.
838. Iron Ore, with Iserine. Bull Moose Hill, N. B.
839. Crystallized Iron. Cornwall.
890. Iron Glance. Elba.
891. Iron Glance.
892. Specular Oxide of Iron. Parrsboro'.
893. Do. Do. with Chlorite. Parrsboro', N. S.
894. Iron Glance, with Crystals of Quartz. Elba.
895. Spathic Iron. New Milford, Conn. U. S.
896. Protoxide of Iron. New-York.
897. Specular Iron, glazing Rocks: Dowd's Farm, N. B.
898. Yellow Oxide of Iron. Charlotte County, N. B.
899. Yellow Oxide of Iron. Bog Ore. New-Brunswick.
900. Brown Oxide of Iron. Aylesford, N. S.
901. Do. Do. Baltimore. Professor Forman.
902. Do. Do. Richibucto, N. B.
903. Hematite, with Sulph. Barytes. Pictou, N. S.
904. Do. M'Lellan's Mountain, Pictou, N. S.
905. Do. Columnar. M'Lellan's Mountain, Pictou, N. S.
906. Botroidal. From the Collection of Mohs.
907. Hematite. Bennington, U. S. Professor Emmons.
908. Black Hematite. Lancashire, England.
909. Hematite. Onslow, Nova-Scotia.
910. Do. United States. W. Wagner.
911. Do. Berkley, U. S. W. Wagner.
912. Do. Pennsylvania.
913. Crystallized Iron. Cornwall, England.
914. Hematite. United States.
915. Do. Baltimore. Professor Forman.
916. Do. Shubenacadie, N. S.
917. Do. United States. Professor Silliman.
918. Do. Nova-Scotia.
919. Red Hematite. Woodstock.
920. Do. Do. Woodstock.
921. Micaceous Oxide of Iron. Guysboro', N. S.
922. Red Oxide of Iron. Parrsboro', N. S.
923. Brown Oxide of Iron. Richibucto, N. B.
924. Argillaceous Oxide of Iron. South Joggins.
925. Pisiform Iron Ore. Grand Lake.
926. Iron Ore. Elba.
927. Carbonate of Iron. Maryland. W. Wagner.
928. Carbonate of Iron, with Crystals of the hydrated peroxide.—
Baltimore. Found in Plastic Clay. Prof. Forman.
929. Carbonate of Iron. Durham. Mr. Neville, London.
930. Spathic Iron. Roxbury Canal; United States.

931. Protoxide of Iron, with Quartz. New-York. Prof. Emmons.
 932. Phosphate of Iron. Cape D'Or.
 933. Do. Do. Do.
 934. Do. Do. New Jersey. Wagner.
 935. Chromate of Iron. Maryland. W. Wagner.
 936. Granular Chromate of Iron. Syria.
 937. Arseniate and Arsenious Iron. Prof. Emmons.
 938. Iron Glance. Elba.
 939. Iron Sand. Grand Manan.
 940. Spathic Iron. Plymouth, Vermont. Prof. Shepard.
 941. Hematite, with Fossil Shells. Nictau, N. S.

GENUS IX.

944. Sulphuret of Lead, (Granular.) Lubec, U. S.
 945. Do. Do. Do. Do.
 946. Do. Do. Do. with Sulphuret of Iron. Lubec.
 947. Do. Do. Do. with Sulphuret of Zinc. Lubec.
 949. Do. Do. Do. with Crystallized Quartz. Lubec.
 950. Granular Do. Wisconsin Territory, U. S.
 951. Galena. England.
 952. Cubic Sulphuret of Lead. Rossie, New-York, U. S.
 953. Galena. Derbyshire, England.
 954. Cubic Sulphuret of Lead. Rossie, New-York.
 955. Sulphuret of Lead. Michigan Territory.
 956. Iridescent Octaedral Lead Ore. New-York. Prof. Emmons.
 957. Galena. Germany.
 958. Crystallized Lead Ore. England.
 959. Iridescent Octaedral Lead Ore. New-York. Prof. Emmons.
 960. Galena. Cornwall, England.
 968. Orange Phosphate of Lead. Cornwa.
 969. Phosphate of Lead.
 970. Phosphate of Lead. Sweden.

GENUS X.

977. Oxide of Tin. Cornwall.
 978. Tin Ore. Cornwall.
 979. Oxide of Tin. Do.
 980. Crystallized Tin.
 981. Oxide of Tin.
 982. Tin Ore. Pokiok, New-Brunswick.

GENUS XI.

86. Sulphuret of Zinc. Lubec Lead Mine.
 87. Do. Do. Do. Do.
 88. Blende. Hallowell, Flintshire, England.
 89. Silicious Oxide of Zinc. Cornwall.
 90. Arborescent Carbonate of Zinc. Cornwall.
 91. Calamine. Derbyshire.
 92. Black Blende or Sulphuret of Zinc. Cornwall.
 93. Sulphuret of Zinc. Derbyshire.
 94. Red Zinc Ore, with Franklinite. New Jersey. Prof. Shepard.
 95. Red Oxide of Zinc. Cornwall.

GENUS XIV.

96. Crystallized Manganese Ore. Tatagouche River. Bathurst.
 97. Grey Oxide of Manganese. England.
 98. Grey Oxide of Manganese. Petite, N. S.
 99. Do. Do. Tatagouche, Bathurst, N. B.
 100. Black Oxide of Manganese. Quaco, N. B.
 101. Do. Do. Do. Bennington, U. S.
 102. Manganese, with Quartz. Tatagouche, Bathurst.
 103. Black Oxide of Manganese. Bennington, United States.

GENUS XVII.

104. Sulphuret of Antimony.
 105. Bismuth.
 106. Bismuth. Connecticut.
 107. Chrome. Island of Cuba.
 108. Chrome Ore. Professor Forman.
 109. Do. Do. Do. Do.
 110. Feroxide of Chrome. Professor Forman.

GENUS XX.

111. Molybdena.
 112. Do. Chester, United States.
 113. Sulphuret Molybdena. St. Stephens, N. B.

VOLCANIC PRODUCTIONS.

114. Lava, containing Hauyn. Etna.
 115. Sulphur, with Sulphate of Strontian. Vesuvius.

- | | | | | |
|-------|--|----------------------------|----------------|-------|
| 1042. | Volcanic Glass. | Ancient Crater, Jamaica. | Capt. Cudlip. | 1083. |
| 1043. | Scoria. | Trap Rocks of Nova-Scotia. | | 1084. |
| 1044. | Scoria. | Blowmedon, N. S. | | 1085. |
| 1045. | Do. | Tobique, N. B. | | 1086. |
| 1046. | Do. | Blowmedon, N. S. | | 1087. |
| 1047. | Spongy Quartz. | Trap Rocks of Nova-Scotia. | | 1088. |
| 1048. | Cellular Quartz. | Tobique, N. B. | Mr. F. Perley. | 1089. |
| 1049. | Pumice. | Etna. | | 1090. |
| 1050. | Amygdaloid. | Trap Rocks of Nova-Scotia. | | 1091. |
| 1051. | Do. | Blowmedon, N. S. | | 1092. |
| 1052. | Claystone, passing into Red Jasper. | Blowmedon. | | 1093. |
| 1053. | Red Jasper, passing from the Claystone, near the junction of | | | 1094. |
| | Trap with Clay. | Blowmedon. | | 1095. |
| 1054. | Yellow Scoria. | Grand Manan. | | 1096. |

MINERALS OF NEW-BRUNSWICK.

- | | | | | |
|-------|---|-----------------------|--|-------|
| 1060. | Calcareous Spar. | French Village, N. B. | | 1100. |
| 1061. | Crystallized Sulphate of Lime. | Sussex Vale. | | 1101. |
| 1062. | Sulphate of Barytes. | Miramichi. | | 1102. |
| 1063. | Sulphate of Iron. | Charlotte County. | | 1103. |
| 1064. | Milky Quartz. | Grand Manan. | | 1104. |
| 1065. | Cannel Coal. | Westmoreland. | | 1105. |
| 1066. | Feldspar. | Nerepis. | | 1106. |
| 1067. | Red Calcareous Spar. | Chance Harbour. | | 1107. |
| 1068. | Calcareous Spar. | Lancaster. | | 1108. |
| 1069. | Iron Pyrites. | Warwig River, N. B. | | 1109. |
| 1070. | Stilbite. | Grand Manan. | | 1110. |
| 1071. | Quartz and Feldspar. | Nerepis. | | 1111. |
| 1072. | Sulphate of Barytes. | Chance Harbour. | | 1112. |
| 1073. | Fluate of Lime. | Musquash Harbour. | | 1113. |
| 1074. | Thompsonite. | Grand Manan. | | 1114. |
| 1075. | Tourmaline. | Warwig River. | | 1115. |
| 1076. | Crystallized Quartz. | Lancaster. | | 1116. |
| 1077. | Argillaceous Oxide of Iron. | Westmoreland. | | 1117. |
| 1078. | Fibrous Gypsum. | Westmorland. | | 1118. |
| 1079. | Hornblende. | Loch Lomond. | | 1119. |
| 1080. | Amethyst. | Chance Harbour. | | 1120. |
| 1081. | Green Carbonate of Lime, with Iron Pyrites. | Musquash. | | 1121. |
| 1082. | Iron Ore. | Coot Hill. | | 1122. |

- Capt. Cudlip.
1083. Bog Iron Ore. Bull Moose Hill.
1084. Iron Ore, glazing the Rocks. Dowd's Cove.
1085. Quartz Crystallized. St. Stephens.
1086. Carbonate of Lime. Miramichi.
1087. Carbonate of Lime. Mouth of Digdeguash.
1088. Spathic Iron Ore, in Carbonate of Lime. Black River.
1089. Yellow Jasper. Washademoak.
1090. Specular Iron Ore, in Quartz. Black River.
1091. Magnetic Iron Ore, with Iserine. Bull Moose Hill.
1092. Milky Quartz. Kingston.
1093. Serpentine. Musquash.
1094. Red Calcareous Spar. Chance Harbour.
1095. Copper Ore, in Lignite. Bathurst.
1096. Oxides of Iron and Manganese. Fredericton.
1097. Oxides of Iron and Manganese. Beaver Harbour.
1098. Ferruginous Quartz. St. Stephens.
1099. Carbonate of Lime. Dowd's Cove.
1100. Sulphuret of Copper, in Carb. of Lime. Beaver Harbour.
1101. Specular Oxide of Iron. Dowd's Cove.
1102. Red Jasper. Washademoak.
1103. Sulphate of Lime. Sussex Vale.
1104. Chlorite. Grand Manan.
1105. Lignite. Quaco.
1106. Anthracite. Little River.
1107. Iron Sand, with Iserine. Petitcodiac.
1108. Black Oxide of Manganese. Quaco.
1109. Sulphate of Iron. Grand Manan.
1110. Grey Manganese Ore. Shepody.
1111. Carbonate of Lime. Shediac.
1112. Sulphate of Barytes. Miramichi.
1113. Oxide of Iron. St. Stephens.
1114. Coal. Tedish River, Westmorland.
1115. Bog Iron Ore. Richibucto.
1116. Hematite. Woodstock.
1117. Red Hematite. Woodstock.
1118. Graphite. St. John.
1119. Crystallized Manganese. Teteagouche, Bathurst.
1120. Do. Do. in Quartz. Do. Do.
1121. Sulphuret of Lead, in Carbonate of Lime. Campo Bello.
1122. Iron Pyrites. Oak Bay.
1123. Iron Pyrites. Prospect Mountain.
1124. Sulphurets of Iron and Lead, with Quartz. Campo Bello.
1125. Sulphuret of Iron. Campo Bello.
1126. Grey Oxide of Manganese. Shepody.
1127. Sulphuret of Copper. Digdeguash.
1128. Galena. Campo Bello.
1129. Sulphuret of Zinc. Campo Bello.
1130. Sulphuret of Iron. Campo Bello.
- Perley.
- ymedon.
- near the junction of
- UNSWICK.
- ale.
- nd.
- es. Musquash.

ROCKS.—*Foreign and Provincial.*

1160.	Granite.	Jones' Mill, River Saint John, New Brunswick.	208
1161.	Do.	Meductic, New Brunswick.	209
1162.	Red Feldspar Granite.	Pokiok, New Brunswick.	210
1163.	Do.	do. Palfry Mountains.	211
1164.	Do.	do. Nerepis, New Brunswick.	212
1165.	Granite.	North West Arm, Halifax, Nova Scotia.	213
1166.	Do.	Near Boston, United States. Used for millstones.	214
1167.	Do.	Near Baltimore, United States.	215
1168.	Do.	Pokiok, New Brunswick.	216
1169.	Do.	Meductic, New Brunswick.	217
1170.	Sienite.	Northward of Quaco, New Brunswick.	218
1171.	Do.	Loch Lomond Road, New Brunswick.	219
1172.	Do.	Near Saint John, New Brunswick.	220
1173.	Do.	Hammond River, New Brunswick.	221
1174.	Micaceous Rock.	North West Arm, Halifax, Nova Scotia.	222
1175.	Mica Slate.	Near Baltimore, United States.	223
1176.	Porphyry Granite.	Near Baltimore, United States.	224
1177.	Gneiss.	Susquehannah, United States.	225
1178.	Gneiss Rock.	North West Arm, Halifax, Nova Scotia.	226
1179.	Diallage Rock.	Cobequid Mountains, Nova Scotia.	227
1180.	Sienite.	Warwig, Charlotte County, New Brunswick.	228
1181.	Sienite.	Sienitic Ridge, New Brunswick.	229
1182.	Gneiss.	Nova Scotia.	230
1183.	Graphic Granite.	Near Baltimore, United States.	231
1184.	Sienite.	Nerepis Hills, New Brunswick.	232
1185.	Granite, containing Schorl and Albite.	Chester, Mass., U. S.	233
1186.	Red Sienite.	Magaguadavic, New Brunswick.	234
1187.	Granite,	from Pompey's Pillar.	235
1188.	Mica Slate.	Meductic, New Brunswick.	236
1189.	Do.	do. drift. Saint John, New Brunswick.	237
1190.	Gneiss.	Near Baltimore, United States.	238
1191.	Sienite.	Digdeguash, New Brunswick.	239
1192.	Hornblende Rock.	Bull Moose Hill, New Brunswick.	240
1193.	Sienite.	Musquash Lakes, New Brunswick.	241
1194.	Granite.	Cheputnecticook Lakes, New Brunswick.	242
1195.	Sienite.	Nictau, Nova Scotia.	243
1196.	Sienite.	Warwig, Charlotte County, New Brunswick.	244
1197.	Granite.	Bathurst, New Brunswick.	245
1198.	Red Feldspar Sienite.	Charlotte County, New Brunswick.	246
1199.	Red Trap.	Cape Chignecto, Nova Scotia.	247
1200.	Trap Rock.	Cape Chignecto, Nova Scotia.	248
1201.	Hornblende Rock.	Isle Haut, Nova Scotia.	249
1202.	Trap.	Cape Chignecto, Nova Scotia.	250
1203.	Red Trap.	Charlotte County, New Brunswick.	251
1204.	Porphyry.	Campo Bello, New Brunswick.	252
1205.	Clay Porphyry.	Sweden. (From Mohs' Collection.)	253
1206.	Porphyry.	Near Loch Lomond, New Brunswick.	254
1207.	Greenstone Trap.	Isle Haut, Nova Scotia.	255.
			256.
			257.

- New Brunswick.
208. Porphyry. Campo Bello, New Brunswick.
209. Porphyry. Nerepis Mountains, New Brunswick.
210. Porphyry. Baltimore, United States.
211. Trap Rock. Clarke's Hill, near Fredericton, N. B.
212. Sienite. Long Reach, New Brunswick.
213. Do. do. do.
214. Red Jasper Rock. Hog Island, New Brunswick.
215. Trap Rock. Kingston, New Brunswick.
216. Amygdaloid. Tobique River, New Brunswick.
217. Do. Quaco, New Brunswick.
218. Do. Parrsboro', Nova Scotia.
219. Do. Grand Manan, New Brunswick.
220. Do. Blowmedon, Nova Scotia.
221. Do. Swan Creek, Parrsboro', Nova Scotia.
222. Do. with Heulandite. Nova Scotia.
223. Do. Peters' Point, Nova Scotia.
224. Trap Rock. Quaco, New Brunswick.
225. Amygdaloid, with Zeolites. Blowmedon, N. S.
226. Do. do. do. do.
227. Yellow Scoria. Grand Manan, New Brunswick.
228. Amygdaloid. Isle Haut, Nova Scotia.
229. Do. Black Rock, Nova Scotia.
230. Trap Rock. Kingston, New Brunswick.
231. Red Trap. New Brunswick.
232. Do. do. Mouth of the Digdeguash, New Brunswick.
233. Trap Rock. Kennebeckasis, New Brunswick.
234. Red Trap. New Brunswick.
235. Trap Rock, containing Sulphuret of Copper. Mouth of the Magaguadavic, New Brunswick.
236. Quartz Rock. Grand Manan, New Brunswick.
237. Do. do. Belleisle Bay, New Brunswick.
238. Do. do. Quaco Road, New Brunswick.
239. Greywacke. Black River, New Brunswick.
240. Mica Slate. Near Halifax, Nova Scotia.
241. Hornblende Slate. Cornwall, England.
242. Hornblende Slate. Baltimore, United States.
243. Hornblende Slate. Near Halifax, Nova Scotia.
244. Trap Rock. Cape Chignecto, Nova Scotia.
245. Greywacke, with Iron Pyrites. Horton Mountains, N. S.
246. Do. with do. do. decomposed.
247. Chlorite Slate. St. Martins, N. B.
248. Roofing Slate. Bangor, Wales.
249. Chlorite Slate. St. Martins, N. B.
250. Clay Slate. Chance Harbour, N. B.
251. Greywacke Slate, coated with Mica. Saint John, N. B.
252. Chlorite Slate. Seeley's Cove, New Brunswick.
253. Novaculite, or Hone Slate, produced by the heat of a Trap Dike. Campo Bello, New Brunswick.
254. Trappean Ash of De La Roche. Black River, N. B.
255. Serpentine. Musquash, New Brunswick.
256. Serpentine. Parrsboro', Nova Scotia.
257. Mica Slate. Meductic Falls, Saint John River, N. B.

1258. Talcose Slate, (heated by Trap Dike.) Charlotte County, N. B. 308.
 1259. Red Sandstone of the Greywacke group. New Brunswick. 309.
 1260. Clay Slate. Beaver Harbour, New Brunswick. 310.
 1261. Serpentine. Pennsylvania. W. Wagner. 311.
 1262. Talcose Slate, (affected by the heat of a Trap Dike.) Dipper Harbour, New Brunswick. 312.
 1263. Talcose Slate. Black River, New Brunswick. 313.
 1264. Hornblende Slate. Black River, New Brunswick. 314.
 1265. Saccharoidal Limestone. Baltimore. Professor Forman: 315.
 1266. Micaceous Slate. Mispeck, New Brunswick. 316.
 1267. Argillite. Woodstock, New Brunswick. 317.
 1268. Mica Slate. Near the Meductic, New Brunswick. 318.
 1269. Chlorite Slate. Saint Martins, New Brunswick. 319.
 1270. Decomposed Schistose Rock. Kennebecasis. 320.
 1271. Serpentine. United States. 321.
 1272. Chlorite Slate. Grand Manan, New Brunswick. 322.
 1273. Marble, containing Fossil Shells. Maine, United States. 323.
 1274. Primary Limestone, (white Marble.) Saint John, N. B. 324.
 1275. Saccharoidal Limestone. (Washington Monument,) Baltimore. 325.
 1276. Marble. Starboard's Creek, Maine, U. S. 326.
 1277. Marble. Leghorn. 327.
 1278. Marble. Ireland. 328.
 1279. Green Marble, with Iron Pyrites. Musquash, N. B.
 1280. Rock containing Chrome Ore. Near Baltimore, U. S.
 1281. Rock north of Baltimore, U. S. Professor Forman.
 1282. Marble. Musquash, New Brunswick.
 1283. Limestone. Emerson's Creek, New Brunswick.
 1284. Greywacke, with Iron Pyrites. South Bay, New Brunswick.
 1285. Old Red Sandstone. Merritt's farm, near Ocnabog, N. B.
 1286. Limestone. Parrsboro', Nova Scotia.
 1287. Do. do. do. 343.
 1288. Limestone, making Hydraulic Cement. United States.
 1289. Limestone. Near Long's Creek, River Saint John, N. B. 344.
 1290. Old Mountain Limestone. Merritt's farm, near Ocnabog Saint John River, New Brunswick.
 1291. Calcareous Breccia. Gondola Point, New Brunswick. 345.
 1292. Limestone. Gay's River, Nova Scotia. 346.
 1293. Greenstone Breccia. Maine, United States.
 1294. Carboniferous Limestone. Salmon River, Truro, N. S. 347.
 1295. Greenstone Breccia. Maine, United States. 348.
 1296. Limestone with Fossil Shells. Economy, Nova Scotia. 349.
 1297. Do. Saint Andrew's River, Nova Scotia. 350.
 1298. Marble. Pictou, Nova Scotia.
 1299. Limestone. Shubenacadie, Nova Scotia.
 1300. Do. Tinnicape, Nova Scotia.
 1301. Do. Chester, Nova Scotia.
 1302. Oolite. England.
 1303. Amygdaloid. Stanley Road, New Brunswick.
 1304. Old Red Sandstone. Near Kentville, Nova Scotia.
 1305. Limestone, with Iron Pyrites. L'Etang, New Brunswick. 360.
 1306. Sandstone coated with Iron Pyrites. Parrsboro', Nova Scotia. 361.
 1307. Shale with Pyrites. Parrsboro', Nova Scotia. 362.

- 308. Calcareous Sandstone. Midland Road, Kingston, N. B.
- 309. Sandstone. Gondola Point, New Brunswick.
- 310. Sandstone. Apple River, Nova Scotia.
- 311. Do. of the Coal Measures. Cumberland, N. S.
- 312. Do. blue grit. Hitty Point, Apple River, N. S.
- 313. Sandstone. Shediac, New Brunswick.
- 314. Do. of the great Coal Field of N. B. Richibucto.
- 315. Do. of Miramichi, New Brunswick.
- 316. Do. Grand Lake, New Brunswick.
- 317. Yellow do. Miramichi River, New Brunswick.
- 318. Limestone. Near Long's Creek, River Saint John, N. B.
- 319. Shale containing Carb. Copper. Bathurst, New Brunswick.
- 320. Bituminous Shale. Westmorland, New Brunswick.
- 321. Recent Conglomerate. Fredericton, New Brunswick.
- 322. Cannel Coal. Westmorland, New Brunswick.
- 323. Recent Conglomerate. Beaver Harbour, New Brunswick.
- 324. Sandy Marl. Saint Andrews, New Brunswick.
- 325. Marl. Port Simonds, New Brunswick.
- 326. Marl. Saint Stephens, New Brunswick.
- 327. Marl. Bathurst, New Brunswick.
- 328. Trap Scoria. Grand Manan, New Brunswick.

MISCELLANEOUS.

- 343. Piece of a Meteoric Stone that fell at Weston, Connecticut, in 1807.
- 344. Singular Stone, found among Fossil Plants at the South Joggins, Cumberland Bay, Nova Scotia.
- 345. A Pebble embraced within a Pebble. Ohio, United States.
- 346. Balls of Sandstone, called Bulls' Eyes, in the Sandstone of the Chignecto Bay, Nova Scotia.
- 347. Do. Do. Do. Do.
- 348. Porphyry. Do. Do. Do.
- 349. Shells cemented by the oxidization of Iron. Jamaica.
- 350. Indurated Clay. Woodstock. Mrs. Merritt.

FOSSILS, MARINE ANIMALS, AND PLANTS.

- 360. Fossil Corallines, in Clay Slate. South Mountains, Kentville, Nova-Scotia.
- 361. Do. Do. Do. Do. Do.
- 362. Do. Do. Do. Do. Do.

1363. Fossil Corallines. Digdeguash River, New-Brunswick. 410.
 1364. Do. Do. Do. Do. 411.
 1365. Do. Do. Near Long's Creek, River Saint John.
 1366. Gorgonia. Shubenacadie, N. S.
 1367. Do. Onslow, N. S.
 1368. Do. Chester, N. S.
 1369. Do. Windsor, N. S. 412.
 1370. Gorgonia. *Infundibuliformius*. Pictou, N. S. 413.
 1371. Do. Do. Windsor, N. S. 414.
 1372. Radiata. England. 414.
 415.
1374. Madrepora. Clifton, England. 116.
 1375. Balani, resembling the Balanus Sepas of Lamark. Horton
 Mountains, Nova-Scotia. 117.
 1376. Remains of Encrinites. United States. Horton. 118.
 1377. Encrinital Remains. South Mountains, N. S. 119.
 1378. Do. Do. Do. 120.
 1379. Top of Lilly Encrinite. Horton, N. S. 120.
 1380. Rings of Encrinites. Windsor, N. S. From Lias Limestone. 21.
 1381. Coralline Limestone. Pictou, N. S. 22.
 1382. Shells in the Transition Limestone. Maine, U. S. 23.
 1383. Remains of Encrinite. Upper Canada. 24.
 1384. Tellenites, Pectenites, Terebratula, &c. in Hematite: the shells
 are encrusted with Phosphate of Lime. 25.
 1385. Do. Do. Do. Do. 26.
 1386. Do. Do. Do. Do. 27.
 1387. Do. Do. Do. Do. 28.
 1388. Do. Do. in Hematite. Pictou, N. S. 29.
 1389. Same Fossil Shells, in Clay Slate. Nictau, N. S. 30.
 1390. Same. 31.
 1391. Same Shells, in Greywacke. Moose River, N. S. 32.
 1392. Same. 33.
 1393. Pecten, in Limestone. Chester, N. S. 34.
 1394. Shell, in Limestone. Manchester, N. S. 35.
 1395. Bellemite. England. 36.
 1396. Pectens. Pictou, N. S. 37.
 1397. Remains of Encrinites. United States. 38.
 1398. *Spirifer Glabra* (Sowerby) Mountain Limestone. Merritt's
 Farm, Ocnabog, N. B. 39.
 1399. Spirifers and other Shells of the Mountain Limestone. Near
 the Ocnabog Lake, N. B. 40.
 1400. Same. 41.
 1401. Same. 42.
 1402. Same. 43.
 1403. Shells of the Mountain Limestone. Head of the Reach, N. B. 44.
 1404. Same. 45.
 1405. Detached Shells. Do. Do. Do. 46.
 1406. Do. Do. Cape Breton. 47.
 1407. Shells of the Greywacke. Eastport, Maine. 48.
 1408. Producta, in Greywacke. New-Brunswick. 49.
 1409. Remains of Encrinites and Shells of the Silurian Limestone.
 Restigouche, N. B. 50.

- New-Brunswick.
Do.
River Saint John.
- N. S.
r, N. S.
- f Lamark. Horton
- Horton.
N. S.
Do.
- om Lias Limestone
- ne, U. S.
- Hematite: the shell
- Do.
Do.
Do.
- ou, N. S.
u, N. S.
- , N. S.
- estone. Merritt's
- Limestone. Near
- f the Reach, N. B.
- Do.
- ilurian Limestone
410. Shells of the Lias Limestone. Nine-mile River, Halifax County, Nova-Scotia.
411. Shells of the upper Silurian System of Mr. Murchison. Wenlock Limestone, Dudley Fossils, Encrinal remains, Tentaculites Ornatus, Terebratuli Cumala, T. Globosa, &c. Prof. Shepard.
412. Terebratuli Lingulifera. Mountain Limestone. Near Dublin. Prof. Shepard.
413. Terebratula Alternata. Do. Do. Do. Do.
414. Euomphalus Pentangularis. Do. Do. Do.
414. Do. Do. Do. Do.
415. Atrypa Reticularis, Silurian System. Beusbera, near Coles. Prof. Shepard.
416. Lithodendron. Flintshire, England.
417. Catenipora Escharoides. Wenlock Limestone. Dudley.
418. Astraea Ananas. Do. Do. Do.
419. Posodinia Becheri (Goldfuss) P. Tuberculata. Murchison. Devon.
420. Fulgorite Madeira. This is probably the Silicified Root of some Plant.
421. Fossils of Wenlock Limestone. Dudley, England.
422. Do. Do. Do. Do.
423. Cyathophyllum Caespitosum. Port Daniel.
424. Resembles Calamopora Polymorpha. Port Daniel.
425. Fossil Corals. Dalhousie, New-Brunswick.
426. Cyathophyllum Turbinum. Dalhousie, New-Brunswick.
427. Fossil Corals, Do. Do.
428. Same, Do. Do.
429. Another variety, Do. Do.
430. Same, Do. Do.
431. Ammonite Lime Regis. England. Colonel Wyer.
432. Large Do. Do. Do. Do.
433. Ammonites; Do. Do. Do.
434. Nautilus. England. Do. Captain Ruel.
435. Terebratuli and other Shells. West River, Pictou.
436. Shells. Rawdon, Nova-Scotia.
437. Do. Chester, Nova-Scotia.
438. Do. Sydney, Cape Breton.
439. Do. Wallace, Nova-Scotia.
440. Encrinites, Producta, Spirifera, &c. Chesapeake Bay.
441. Do. Do. Do. Baltimore. Prof. Forman.
442. Shells in Limestone. Nine-mile River, County Halifax, N. S.
443. Shells in the Shale of the Coal Field. Joggins, Cumberland, [N. S.]
444. Shells. From the same.
445. Do. in Limestone of Economy, Nova-Scotia.
446. Do. Do. Do. Do.
447. Top of the Encrinite. Pictou, Nova-Scotia.
448. Shells. Eastport, Maine. In the Greywacke Group.
449. Do. Nepal, Cumberland, Nova-Scotia.
450. Do. Do. Do. Do.
451. Do. West Bay, Parrsboro', Nova Scotia.
452. Shells. West Bay, Parrsboro', Nova Scotia.
453. Do. Do. Do. Do.

1454. Shells. De Burt River, Londonderry, Nova Scotia.
 1455. Do. Sydney, Cape Breton.
 1456. Do. Moose River, Parrsboro', Nova Scotia.
 1457. Do. Do. Do. Do.
 1458. Do. Londonderry, De Burt River, Nova Scotia.
 1459. Do. In the Shale above the Coal, Joggins, Cumberland, N. S.
 1460. Do. P. Island River, Parrsboro', Nova Scotia.
 1461. Do. Do. Do. Do.
 1462. Do. Do. Do. Do.
 1463. Fossil Shells in the Sandstone of Parrsboro', Nova Scotia.
 1464. Fossil Shells of the Lias Limestone. Londonderry, N. S.
 1465. Rings of Encrinites and Corals of the Lias. Nova Scotia.
 1466. Do. Do. Do. Do. Do.
 1467. Fossil Shells from the Lias. Windsor, Nova Scotia.
 1468. Microscopic Do. from Do. Do. Do.
 1469. Shells, from Do. Do. Do.
 1470. Do. Do. Do. Do.
 1471. Do. Do. Do. Do.
 1472. Shells of the Loudon Clay, (Tertiary.) G. S. L.
 1473. Do. Do. Do. Do. G. S. L.
 1474. Shells of the Mountain Limestone. Canada.
 1475. Do. from the Red Sandstone, Nova Scotia.
 1476. Clypeaster of the Tertiary Marl. Saint Andrews, N. B.
 1477. Pecten Obliques of Do. Do. Do.
 1478. Shells of the Tertiary Marl. St. Andrews, New-Brunswick.
 1479. Do. Do. Do. Port Simonds.
 1480. Do. Do. Do. Nova Scotia.
 1481. Asaphus Caudatus. Grand Lake, New Brunswick.
 1482. Penna Maximus. Maryland, United States.
 1483. Tertiary Limestone, including remains of Strombus, Venericardie, &c.
 1487. Shells. Coral Reefs. Jamaica.
 1488. Jaw of Fish. From the Marl of Port Simonds.
 1489. Aleyonium in Flint. Dover Cliffs, England.
 1490. Fossil Shells, Terebratula, &c. Grand Manan, N. B.

FOSSIL FISH.

1510. Palæoniscus. Freizlebense, (Blainville,) from Eisleben, on Copper Slate. Professor Shepard.
 1511. Palæoniscus. (Agassiz.) Ruppendoorf, Bohemia.
 1512. Fossil Fish. Valley of Connecticut. W. Wagner.
 1513. Do. Do. Do. Do. Do.
 1514. Ornithichnites. (Hitchcock.) Springfield, Massachusetts.
 (See American Journal of Science.)

FOSSIL PLANTS.

520. Fossil *Stigmaria, Ficoides* of Lindley and Hutton: it resembles the Cactus. South Joggins, Cumberland, N. S.
521. The same.
522. The same. From Parrsboro', Nova Scotia.
523. *Stigmaria Ficoides*, with the pith remaining. South Joggins, Cumberland, Nova Scotia.
524. The same. From the Sandstone of the Pictou Coal Field, N. S.
525. The same, with the pith perfect. Salmon River, N. B.
526. The same, in Clay Iron Stone. Joggins, Cumberland, N. S.
527. *Equisetum* or *Calamite*, compressed in the Shale underlying the Coal at South Joggins, Cumberland, N. S.
528. *Calamitæ*. Coast Chignecto Bay Coal Field, Cumberland, N. S.
529. Flattened *Equisetums*. Tatmagouche, Nova Scotia.
530. *Calamites*. Grindstone Island, New-Brunswick.
531. *Calamites*, *Approximatus* of Brongniart. *Bambusites* of Dr. Martius.—*Equisetums*. Joggins, Cumberland, N. S.
532. *Calamites* or *Equisetums*. Pictou Coal Field, Nova-Scotia.
533. The same. From Do.
534. Remains of a large Tree found in the centre of a cylindrical mass of Coal. The whole Tree had been converted into Coal, except the part represented by the Specimens. The Annular Rings of the Tree still remain perfect. From Tatmagouche, Nova Scotia.
35. The same as above.
36. *Sigillaria, Syringodendron* of Count Sternburg, in Clay Iron Stone. South Joggins, Cumberland, Nova Scotia.
37. *Sigillaria*: another variety from large Trees. South Joggins, Cumberland, Nova Scotia.
38. *Sigillaria*. North Joggins, New-Brunswick.
39. Fossil Plant. Species not determined. Grindstone Island, New Brunswick.
40. *Sigillaria* of different varieties. Cumberland Coal Field, Nova Scotia.
41. Do. Do. Do. Do.
42. *Phytolitus Transversus*. Joggins, Nova Scotia.
43. *Phytolitus Transversus*. Joggins, Nova Scotia.
44. Other varieties of Plants. Species not determined.
45. *Sigillaria*. Rare varieties in the Coal Fields of Nova Scotia, and New Brunswick. From South Joggins, Cumberland, Nova Scotia.
46. Fossil Stem of a Plant, partially changed into Coal. Joggins, Nova Scotia.
47. Fossil *Calamite*, with the top perfect. South Joggins, Cumberland, Nova Scotia.
48. *Calamites*. From Do. Do. Do.
49. *Calamite*. From Do. Do. Do.
50. Do. From Bathurst, New Brunswick.
51. Part of a large Fossil Tree. Grindstone Island, N. B.
52. Resembles a flowering spike of a Plant. Parrsboro', N. S.
53. *Phytolitus Transversus*. South Joggins, Nova Scotia.
54. Part of a Fossil Tree. Grand Lake, New Brunswick.

1555.	Fossil Wood.	North Joggins,	New Brunswick.	
1556.	Do. Do.	South Joggins,	Nova Scotia.	
1557.	Parts of large Fossil Trees.	Grand Lake,	New Brunswick.	162
1558.	Do. Do. Do. Do. Do.			162
1559.	Part of a large Fossil Tree in the Greywacke at Little River,	Saint John,	New Brunswick.	162
1560.	Fossil Wood Crystallized.	Miramichi,	New Brunswick.	162
1561.	Part of a Fossil Tree.	Quaco,	New Brunswick.	162
1562.	Fossil Wood.	Ragged Reef,	Cumberland, Nova Scotia.	162
1563.	Do. Do.	with the vegetable fibres perfect.	Do. Do.	162
1564.	Fossil Wood, part of a large Tree converted into Iron Pyrites.	Parrshoro',	Nova Scotia.	162
1565.	Limbs of a Fossil Tree.	Pictou,	Nova Scotia.	162
1566.	Limb and Knot.	Parrshoro',	Nova Scotia.	163
1567.	Fossil Fungus from a large Tree.	Joggins,	New Brunswick.	163
1568.	Limb.	Quaco,	New Brunswick.	
1569.	Fossil Stems.	Joggins,	New Brunswick.	
1570.	Do. Do. Do. Do.			
1571.	Do. Do. Do. Do.			
1572.	Do. Do.	partially carbonized.	Joggins, New Brunswick.	
1573.	Fossil Conifera—the pith filled with Crystals of Sulphate of Barytes and the Bark converted into Coal.	Ragged Reef.	Nova Scotia.	1610
1574.	Fossil Plant, (undescribed by authors.)	Joggins, N. S.		1641
1575.	Fern.	Grindstone Quarries,	Minudie, Nova Scotia.	1642
1576.	Fossil Leaves.	Bathurst Harbour,	New Brunswick.	1643
1577.	Do. Do. Do.			1644
1578.	Do. Do. Do.			1645
1579.	Do. Do. Do.			1646
1580.	Do. Do. Do.			1647
1581.	Wood, Fossilized with Copper Ore.	Bathurst, N. B.		1648
1582.	Fossil Fruit or Seed Vessels.	Parrshoro',	Nova Scotia.	1619
1583.	Singular mass of Clay Iron Stone found among Do.			1650
1584.	Leaves.	Parrshoro',	Nova Scotia.	1651
1585.	Do. Do. Do.			1652
1586.	Do. Do. Do.			1653
1587.	Do. in Clay Iron Stone.	Joggins,	Nova Scotia.	1654
1588.	Do.	Grand Lake,	New Brunswick.	1655
1589.	Do. in the Anthracite Coal of Pennsylvania.			1656
1590.	Spinal Leaves.	Parrshoro',	Nova Scotia.	1657
1591.	Fern Leaves, in the Shale underlieing the Coal,	Sydney, C. B.		1658
1592.	Do. Do. Do. Do. Do.			1659
1593.	Petrified Wood.	Antigua,	West Indies.	1660
1594.	Do. Do. Do. Do.			1661
1595.	Do. Do. Do. Do.			1662
1596.	Shells from the Marl of Bathurst,	New Brunswick.		1663
				1664
				1665
				1666
				1667
				1668
				1669
				1670
				1671

CORALS.

- New Brunswick.
 Do.
 at Little River,
 v Brunswick.
 wick.
 Nova Scotia.
 ct. Do. Do.
 into Iron Pyrites.
 ia.
 New Brunswick.
1620. Corals. New Zealand. Mr. C. C. Stewart.
 1621. Do. Do. Mr. Jackson.
 1622. Do. Toobooni, one of the Society Islands in the South Pacific. Mr. A. Coughlan.
 1623. Coral. Bermuda.
 1624. Do. Do.
 1625. Do. Western Reefs of Bermuda.
 1626. Do. South side of Bermuda.
 1627. *Meandrina Cerebriformis*. Brainstone Coral from Bermuda.
 1628. Coral. From Bermuda.
 1629. Do. Coral Reefs, Turk's Island, West Indies.
 1630. Do. Jamaica.
 1631. Do. Shores of the Bay of Fundy.

CRUSTACEA.

SHELLS.

- New Brunswick,
 s of Sulphate of
 l. Ragged Reef.
 gins, N. S.
 a Scotia.
 usswick.
 rst, N. B.
 Nova Scotia.
 ng Do.
 Scotia.
 ia.
 al, Sydney, C. B.
 Do.
 swick.
1640. *Unio Ocraceus*.
 1641. — *Vetusus*. Ohio, United States.
 1642. — — — — —
 1643. — *Ocraceus*. Delaware, United States.
 1644. — *Circulus*.
 1645. — *Securis*. Ohio River.
 1646. — *Splendidus*. (Lea.)
 1647. — *Hopetonensis*. (Lea.)
 1648. — *Splendidus*. (Lea.)
 1649. — *Shepardianus*. Georgia. (Lea.)
 1650. — Do. Do. Do.
 1651. — *Complicatus*. Allegany.
 1652. — *Dentatus*.
 1653. — *Planulatus*.
 1654. — *Cordatus*.
 1655. *Stegaris*. Allegany.
 1656. *Unio Purpura*.
 1657. *Anomia Placenta*.
 1658. *Onodonto Marginita*. Baltimore.
 1659. *Unio Fasciatus*.
 1660. — *Clava*.
 1661. — *Vulvotundus*.
 1662. — *Perplexus*.
 1663. — *Alatus*.
 1664. — *Fasciolarus*.
 1665. — *Pustulosus*.
 1666. — *Ulicatus*.
 1667. *Cyprea Vitellus*.
 1668. — *Mauritianna*.
 1669. — *Amethysta*.
 1670. — *Arabica*.
 1671. — *Tigrina*.

1672.	<i>Cyprea Zebra.</i>	1722.
1673.	— <i>Tygris.</i>	1721.
1674.	— <i>Servina.</i>	1720.
1675.	— <i>Histrio.</i>	1719.
1676.	— <i>Talpa.</i>	1718.
1677.	— <i>Stercovaria.</i>	1717.
1678.	— <i>Ventriculus.</i>	1716.
1679.	— <i>Lynx.</i>	1715.
1680.	— <i>Cinera.</i>	1714.
1681.	— <i>Ebasa.</i>	1713.
1682.	<i>Venus Notata.</i>	1712.
1683.	<i>Trochus Niloticus.</i>	1711.
1684.	<i>Conus Lacteus.</i>	1710.
1685.	<i>Cyrtium Perspectivum.</i>	1709.
1686.	<i>Terebra Maculata.</i>	1708.
1687.	<i>Turbo. From China.</i>	1707.
1688.	<i>Natica Sanguinea.</i>	1706.
1689.	<i>Ranella Crumina.</i>	1705.
1690.	<i>Fulgar (Fossil.) Maryland.</i>	1704.
1691.	<i>Fulgar Carica (Fossil.) Maryland.</i>	1703.
1692.	<i>Fulgar Canaticulatus (Fossil.) Maryland.</i>	1702.
1693.	<i>Fulgar Canaticulatus (Fossil.) Maryland.</i>	1701.
1694.	<i>Bulla Marmorea. China.</i>	1700.
1695.	<i>Pyrula Vespertilio. Indian Ocean.</i>	1699.
1696.	<i>Oliva Alba. Pacific Ocean.</i>	1698.
1697.	<i>Helix Aspera.</i>	1697.
1698.	<i>Oliva Marmorea. Pacific Ocean.</i>	1696.
1699.	<i>Helix Albolabris. Baltimore.</i>	1695.
1700.	<i>Helix Lactea.</i>	1694.
1701.	<i>Pterocera. Island of Java.</i>	1693.
1702.	<i>Turbo. China.</i>	1692.
1703.	<i>Helix Monosoralis. Pacific Ocean.</i>	1691.
1704.	<i>Paludina Decisa. Baltimore.</i>	1690.
1705.	<i>Cerithium Perspectivum. Pacific.</i>	1689.
1706.	<i>Calyteria. New Jersey, United States.</i>	1688.
1707.	<i>Scutilla Pentapora. South Carolina.</i>	1687.
1708.	<i>Pecten Madesonius.</i>	1686.
1709.	<i>Pecten Clintonius.</i>	1685.
1710.	<i>Terebra Maculata.</i>	1684.
1711.	<i>Cyprea Anulus.</i>	1683.
1712.	<i>Helix Albolabris.</i>	1682.
1713.	<i>Unio Planulatus. Wabash, United States.</i>	1681.
1714.	<i>Helix Concava.</i>	1680.
1715.	— <i>Thyroidea. Ratapsco River, Baltimore.</i>	1679.
1716.	— <i>Tridenta.</i>	1678.
1717.	— <i>Pennsylvania.</i>	1677.
1718.	— <i>Fallax.</i>	1676.
1719.	— <i>Incerta.</i>	1675.
1720.	— <i>Thyroides.</i>	1674.
1721.	— <i>Profunda.</i>	1673.
1722.	— <i>Solitaria.</i>	1672.
1723.	— <i>Ligera.</i>	1671.
1724.	<i>Unio Planulatus. Wabash, United States.</i>	1670.

1725. *Melania*. Schuylkill, United States.
 1726. Do. Do. Do.
 1727. *Conus*. West Indies.
 1728. *Melania Multilinea*.
 1729. *Melania*. Virginia, United States.
 1730. *Helix*.
 1731. *Nerita Veridis*. West Indies.
 1732. *Melania Multa*. Virginia, United States.
 1733. *Pyrula Nuricata*.
 1734. *Pyrula*.
 1735. Do.
 1736. *Natica Ampullaria*.
 1737. *Natica Similis*.
 1738. Do. Do.
 1739. *Venus Literata*.
 1740. *Cytherea Concentrica*. (Lamark,) South Carolina.
 1741. Do. Do. Do. Do.
 1742. *Venus*. Indian Ocean.
 1743. *Telina Radiata*.
 1744. *Telina Unimaculata*. (Lamark.)
 1745. *Telina Radiata*.
 1746. *Oliva*. Nassau, Bahamas.
 1747. Do. Do. Do.
 1748. *Arca Pexata* (Say.)
 1749. *Arca*. Gulph of Mexico.
 1750. *Arca Incongrua* (Say.)
 1751. Do. Do. Say. South Carolina.
 1752. *Balanus Ovularis*. Baltimore.
 1753. *Cardium Maculatum*.
 1754. *Dolium*.
 1755. *Pinna Muricata*. South Carolina.
 1756. *Pinna Seminuda*. South Carolina.
 1757. *Cyclostoma Marginata*.
 1758. *Helix Arborea*. Baltimore.
 1759. — *Alternata*.
 1760. *Ancylus Tarden*. Baltimore.
 1761. *Lyncea Dendrosa*.
 1762. *Helix Lineata*.
 1763. *Perna*. West Indies.
 1764. *Planorbis Parnus*.
 1765. *Planorbis Bicarínatus*.
 1766. *Paludina Dissimilis*.
 1767. *Pupa Procea*. Baltimore.
 1768. *Mytilus Leucopterus*.
 1769. *Valvata Arenacea*.
 1770. *Lymnea Columella*.
 1771. *Cyprea Asselus*.
 1772. Shells from the Mississippi.
 1773. *Mytilus Lithophagus*. Jamaica.

*Shells of Nova Scotia and New Brunswick—not arranged*1780. Box containing Shells of Nova Scotia and New Brunswick—
not arranged.

1781. Do. do. do. do. do.

1784. Shells from Africa. Mr. C. C. Stewart and others.

1785. Shells from the West Indies.

1786. Shells from the West Indies.

1787. Shells from Society Islands. Pacific Ocean. Mr. Coughlan

1788. Insects. China.

1795. *Actacus Marinus*. Common Lobster.1796. *Cancer*. Lin. *Lupahastata*. Fab. Edible Crab.1797. *Astacus Bartonii*. Bosc. Craw-fish. Lake Temiscouata.—
H. Perley, Esquire.

FISHES.

1802. *Cyclopterus Lumpus*. Lump-fish. Above the Falls of Saint
John. Mr. Jones.1803. *Cyclopterus*. Barbadoes. Colonel Monins.

1804. Do. do. do.

1805. *Hippocampus*. (Sea-horse.) East Indies. Capt. Cudlip.

1806. Fish taken near Quaco, by Mr. Andrew Newcomb.

1807. *Asterias*. (Star-fish.) Halifax, Nova Scotia.1808. *Astracion*. Sea-porcupine. New Zealand. Mr. C. C. Stewart

REPTILES.

1810. *Chelonica Mydas*. Common Green Turtle. West Indies.1811. *Testudo*. L. Large fresh water Turtle. New Brunswick
Common in the large Lakes. Hon. Wm. Crane.1812. *Testudo*. Land Tortoise. New Brunswick.1813. *Testudo*. Mud Turtle in Ponds. Nova Scotia.

1815. Iguana. East Indies. Dr. Livingstone.

1816. Toad. do. do.

1817. *Cobra Capella*. South America. Dr. Livingstone.

1818. Moccasin Snake. Mr. T. L. Taylor.

1819. Reptiles. West Indies. Dr. Livingstone.

1820. Do. South America. Dr. Livingstone.

1821. Centipedes. West Indies.

1822. Reptiles from Savannah. Captain Davys.

BIRDS

OF

NOVA SCOTIA AND NEW BRUNSWICK.

L. denotes Linnæus; *B.* Buffon; *Cuv.* Cuvier; *Wils.* Wilson;
Bon. Bonaparte; *Aud.* Audibon.

SUB. CLASS I.

ORDER I.—ACCIPITRES.

30. *Falco Leucocephalus*. L. Bald Eagle. Nova Scotia.
31. Do. do. The same in different plumage—by
some called the Gray Eagle. Nova Scotia.
32. *Falco Haliaetus*. L. Fish Hawk, or Osprey.
33. — *Sparverius*. L. Sparrow Hawk. Nova Scotia.
34. — *Columbaris*. Pigeon Hawk; male. Nova Scotia.
35. — Do. do. do. female. New Brunswick.
36. — *Uliginosus*. Wils. Marsh Hawk; male. N. S.
37. — Do. do. do. do. female.
38. — *Cooperii*. Bon. Nova Scotia.
39. — *Borealis*. American Buzzard. Latham. Red-tailed
Hawk. Aud. Nova Scotia.
40. — *Pennsylvanicus*. Wils. *Falco Velox*. Bon. Slate col-
ored Hawk. Nova Scotia.
41. *Falco*.—Species not determined nor described by authors; rare
in Nova Scotia and New Brunswick.—Killed at Port
Simonds, N. B., by Capt. J. H. Reeve, 36th Regiment.
44. *Strix Hudsonia*. Wils. Hawk Owl. Nova Scotia.
45. — *Nyctea*. Lin. Snowy Owl; male. New Brunswick.
46. — Do. do. do. female.
47. — *Virginiana*. Gmelin. Great horned Owl; male.
48. — Do. do. do. do. female.
49. — *Nebulosa*. Barred Owl; male. Nova Scotia.
50. — Do. do. do. female. Nova Scotia.
51. — *Otus*. L. Long-eared Owl. Nova Scotia.
52. — *Asio*. L. Little Screech Owl; male. Nova Scotia.
53. — Do. do. do. do. female. Nova Scotia.

ORDER II.—PASSERES.

TRIBE I.—*Scansores.*

- 1855. *Cuculus Carolinensis.* American Cuckoo. 00.
- 1856. *Picus Auratus.* L. Golden-winged Woodpecker; male. 01.
- 1857. Do. do. do. do. female. 02.
- 1858. *Picus Pileatus.* L. Pileated Woodpecker; male. N. S. 03.
- 1859. Do. do. do. do. do. female. N. B. 04.
- 1860. *Picus Pubescens.* L. Downy Woodpecker; male. 05.
- 1861. Do. do. do. do. do. female. 06.
- 1862. — Species not described by authors. New Brunswick. 07.

TRIBE II.—*Ambulatores.*

- 1864. *Alcedo Aleyon.* L. Belted Kingfisher; male. N. B. 03.
- 1865. Do. do. do. do. female. 09.
- 1866. *Icterus Baltimore.* Baltimore Oriole; male. N. B. 10.
- 1867. Do. do. do. do. female. N. B. 11.
- 1868. Do. do. do. do. young male. N. B. 12.
- 1869. — *Agripennis.* Bon. Rice Bunting, or Boblink; male. N. B. 13.
- 1870. Do. do. do. do. female. N. B. 14.
- 1871. *Corvus Corone.* L. Crow; male. New Brunswick. 15.
- 1872. Do. do. do. do. female. 16.
- 1873. *Corvus Corax.* Raven; male and female. New Brunswick. 17.
- 1874. *Corvus Cristatus.* L. Blue Jay; male. 18.
- 1875. Do. do. do. do. female. 19.
- 1876. *Bombycilla Carolinensis.* Brisson. Cedar Bird; male. N. B. 20.
- 1877. Do. do. do. do. female. 21.
- 1878. *Caprimulgus Vociferus.* Wils. Whip-poor-Will. 22.
- 1879. — *Virginianus.* Brisson. Night Hawk; male. 24.
- 1880. Do. do. do. do. female. 25.
- 1881. *Cypselas Pelasgius.* Temminck. Chimney Swallow. N. B. 26.

- 1885. *Muscicapa Tyrannus.* Brisson. Tyrant Flycatcher. N. B. 29.
- Bird. New Brunswick. 30.
- 1886. *Muscicapa Rutililla.* American Redstart. 31.
- 1887. *Muscicapa Crinita.* L. Great crested Flycatcher. N. B. 32.
- 1888. — *Olivacea.* Red-eyed Flycatcher; male. N. B. 33.
- 1889. Do. do. do. do. female. 33.
- 1890. *Lanius Septentrionalis.* Gmelin. Butcher Bird. N. B. 39.
- 1891. *Muscicapa Pusilla.* Wils. Green, black-capped, Flycatcher. 40.
- male. New Brunswick. 41.
- 1892. Do. do. do. do. female. New Brunswick. 42.
- 1893. *Turdos Felivox.* Cat Bird. New Brunswick. 39.
- 1894. *Sylvea Vireus.* Latham. Black-throated Green Warbler. 40.
- male. New Brunswick. 41.
- 1895. Do. do. do. do. do. female. N. B. 42.
- 1896. *Turdos Migratorius.* L. Robin; male. Nova Scotia. 43.
- 1897. Do. do. do. do. do. female. Nova Scotia. 43.

98. Turdos Minor. Hermit Thrush. New Brunswick.
 99. Sylvia Coronata. Latham. Yellow-rumped Warbler; male.
 New Brunswick.
 100. Do. do. do. do. do. female. N. B.
 101. Sylvia Magnolia. Wils. Black and Yellow Warbler. N. B.
 102. Sylvia Citrinella. Wils. Blue-eyed, Yellow Warbler.
 103. Sylvia Petechia. Wils. Yellow, Red-poll'd Warbler; male.
 104. Sylvia Pusilla. Wils. Blue, Yellow-backed, Warbler; male.
 New Brunswick.
 105. Do. do. do. do. do. female. N. B.
 106. Sylvia.—Species not determined. New Brunswick.
 107. Parus Atricapillus. Wils. Black-capt Titmouse—Chichadee; male. New Brunswick.
 108. Do. do. do. do. do. female; N. B.
 109. Certhia Familiaris. Wils. Brown Creeper; male.
 110. Do. do. do. do. do. female.
 111. Sylvia Regulus. Wils. Golden crested Wren; male. N. S.
 112. Do. do. do. do. do. female. N. S.
 113. Sylvia Troglodytes. Wils. Winter Wren. New Brunswick.
 114. Sitta Varia. Wils. Red-bellied black-cap Nuthatch; male.
 New Brunswick.
 115. Do. do. do. do. do.
 116. Alanda Alpestris. Lin. Shore Lark; male. N. B.
 117. Do. do. do. do. female. N. B.
 118. Anthus Spinoletta. Bon. Brown Lark. New Brunswick.
 119. Trochilus Colubris. Lin. Humming Bird; male. N. S.
 120. Do. do. do. do. female.
 121. Emberiza Nivalis. L. Snow Bunting; male. N. B.
 122. Do. do. do. do. female.
 123. Fringilla Hiemalis. Snow Bird. New Brunswick.
 124. Fringilla Melodia. Wils. Song Sparrow; male.
 125. Do. do. do. do. female.
 126. Fringilla Canadensis. Latham. Male; New Brunswick.
 127. Fringilla Pusilla. Wils. Field Sparrow; male.
 128. Do. do. do. do. female.
 129. Fringilla Passerina. Wils. Yellow-winged Sparrow; male.
 New Brunswick.
 130. Do. do. do. do. female.—A fine songster in
 New Brunswick.
 131. Fringilla Illiaca. Fox-colored Sparrow; male. N. B.
 132. Fringilla Tristis. L. Yellow Bird, or Goldfinch; male.
 133. Do. do. do. do. do. female. "
 134. Do. do. do. do. do. in autumnal plumage.
 135. Pyrrhula Enucleator. Pine Bulfinch; male. N. B. Wils.
 Flamingo, Grosbeak, Latham.
 136. Do. do. do. do. females.

1944. *Fringilla Purpurea*. Purple Finch; male. New Brunswick
 1945. Do. do. do. female. N. B.
 1946. *Curvirostra Leucoptera*. Wils. White-winged Crossbill
 male. New Brunswick.
 1947. Do. do. do. females.
 1948. *Curvirostra Americana*. Wils. American Crossbill; male
 1949. *Corvus Canadensis*. Wils. Canadian Jay, or Moose Bird
 male. Nova Scotia.
 1950. Do. do. do. do. female.
 1951. *Columba Migratoria*. L. Passenger Pigeon; male. N. S.
 1952. Do. do. do. do. female. N. S.
 1953. *Columba Carolinensis*. L. Turtle Dove; male. N. S.
 1954. Do. do. do. do. female. N. S.

ORDER III.—GALLINÆ.

1955. *Tetrao Umbellus*. L. Birch Partridge; male.
 1956. Do. do. do. do. female.
 1957. *Tetrao Canadensis*. L. Spruce Partridge; male.
 1958. Do. do. do. do. female.

ORDER IV.—GRALLÆ.

Family Pressirostres.

1959. *Charadrius Heaticula*. Wils. Ringed Plover; male. N. S.
 1960. Do. do. do. do. female. N. S.
 1961. *Charadrius Pluvialis*. Bon. Golden Plover; male. N. B.
 1962. Do. do. do. do. female.
 1963. *Charadrius Apricarius*. Wils. Black-breasted Plover; male
 New Brunswick.
 1964. Do. do. do. do. female. N. B.
 1965. *Charadrius Calidris*. Wils. Sanderling Plover. N. B.
 1966. *Charadrius Rubidus*. Wils. Ruddy Plover. N. B.

Family Herodii.—Illigar.

1967. *Ardea Herodius*. Wils. Great Heron; male. N. B.
 1968. Do. do. do. do. female.
 1969. *Ardea Miuor*. American Bittern. Wils.—Meadow Hen on
 Bunkan of New Brunswick.—Shite Poke of Nova Scotia
 1970. Do. do. do. do. female. New Brunswick

Family Simicolæ.

1971. *Numenius Hudsonicus*. Esquimaux Curlew. N. B.
 1972. *Scolopax Fedoa*. Wils. Great marbled Godwit; female. N. B.
 1973. *Scolopax Gallinago*. Snipe; male. New Brunswick.
 1974. Do. do. do. female.

- le. New Brunswick.
 male. N. B.
 Te-winged Crossbill
 males.
 can Crossbill; male
 Jay, or Moose Bird
 female.
 geon; male. N. S.
 female. N. S.
 ; male. N. S.
 female. N. S.
76. *Scolopax Minor*. Bon. Woodcock. New Brunswick.
 77. Do. do. do. female. New Brunswick.
 78. *Scolopax Semipalmata*. Wils. Yellow-legged Snipe; male.
 New Brunswick.
 79. Do. do. do. do. female. N. B.
 80. *Scolopax noveboracensis*. Wils. Red-breasted Snipe; male.
 New Brunswick.
 81. *Tringa pusilla*. Wils. Little Sandpiper; male. N. B.
 82. Do. do. do. do. female. N. B.
 83. *Rallus virginianus*. L. Virginian Rail. New Brunswick.
 84. — *Carolinus*. Bon. Rail. New Brunswick.
 85. *Rallus*.—Not described by American authors: a rare species.
 Nova Scotia.

ORDER V.—ANSERES.

Family Longipennes.

- male.
 female.
 ge; male.
 female.
86. *Sterna Hirunda*. L. Great Tern; male. New Brunswick.
 87. Do. do. do. do. female. New Brunswick.
 88. *Larus Canus*. L. Common Gull; male. New Brunswick.
 89. Do. do. do. do. female. New Brunswick.
 90. — *Capistratus*. L. Gray Gull; male. New Brunswick.
 91. — Do. do. do. do. female. New Brunswick.

Family Lemallosodontati.—Ill.

- over; male. N. S.
 female. N. S.
 ver; male. N. B.
 female.
 asted Plover; male
 female. N. B.
 Plover. N. B.
 er. N. B.
92. *Anas Canadensis*. Wils. Canada Goose; male. N. S.
 93. Do. do. do. do. female. N. B.
 94. *Anser Bernicla*. Bon. Brant. Nova Scotia.
 95. *Anas glacialis*. Wils. Long-tailed Duck; male. N. S.
 96. Do. do. do. do. female.
 97. *Anas americana*. American Widgeon; male. Nova Scotia.
 98. *Anas sponsa*. Wils. Wood Duck; male.
 99. Do. do. do. do. female.
 100. *Anas marilla*. Wils. Scaup Duck. New Brunswick.
 101. *Anas*.—Species not determined.—Male. New Brunswick.
 102. Do. do. do. do. female. New Brunswick.
 103. — *Perspicillata*. Wils. Black or Surf Duck. N. B.
 104. *Mergus gosander*. Wils. Gosander or Sheldrake; male. N. B.
 105. Do. do. do. do. female. N. B.
 106. — *Cucullatus*. Hooded Merganser. New Brunswick.
 107. *Anas obscura*. Wils. Dusky or Black Duck; male. N. B.
 108. Do. do. do. do. do. female. N. S.
 109. *Anas histriónica*. Wils. Harlequin Duck. Nova Scotia.
 110. — — Supposed by some to be the female: very
 rare. Nova Scotia.
 111. *Podiceps*. Grebe. New Brunswick.
 112. *Uria alle*. Wils. Little Auk; male. Nova Scotia.
 113. — — Do. do. female. Nova Scotia.
 114. *Uria* — Auk. New Brunswick.
- v. N. B.
 it; female. N. B.
 Brunswick.

- net. Nova Scotia. 71. *Felix Canadensis*. Lynx. Loup Cervier or Wild Cat.
 d. 73. *Phoca Vitulina*. L. Common Seal.
 male. Nova Scotia. 75. *Castor Fiber*. L. Beaver.
 male. Nova Scotia. 77. *Fiber Zibethicus*. L. Musquash; male.
 le. 78. — do. female.
 a Diver, or Loon; 79. *Mus Rattus*. L. Black Rat.
 female. N. S. 80. *Mus*. White Rat.
 ated Diver. N. B. 82. *Gerbillus Canadensis*. Jumping Mouse. Deer Mouse.
 84. *Arctomys Monax*. Gmelin. Woodchuck.
 86. *Sciurus Hudsonius*. Red Squirrel; male.
 87. — do. female.
 83. — *Striatus*. Striped or Ground Squirrel; male.
 89. — do. do. do. do. female.
 90. *Pteromys Volucella*. L. Flying Squirrel; male.
 93. *Hystrix Pilosus*. (Dorsata.) L. Porcupine.
 95. *Lepus Americanus*. Rabbit; male.
 96. — do. female.
 93. *Cervus Virginianus*. Common or Fallow Deer; male.
 99. — do. do. female.
 00. *Cervus Tarandus*. Rein-deer or Cariboo; male.
 01. — do. do. female.
 03. *Cervus Alces*. The Elk. Moose. The Black Bell Moose of
 Nova Scotia.

ant, Grouse, Par-
 pper part contains
 the case there are

MISCELLANEOUS.

SWICK.

Mole.
 male.
 female.

male.

0. Insects of New Brunswick.
1. Insects of Savannah. Captain Davys.
4. Silk Cotton. Jamaica. Mr. Balloch.
5. Gorgonia. Sea Fan. Bermuda.
6. Dried Plants. Jamaica. Mr. Balloch.
8. Sponge. Bay of Fundy.
9. Sponge. Mediterranean.
0. Ova of the Common Conch. West Indies.
1. Shark's Jaw. South America.
2. Gum Copal. From the Copal Tree. Col. Monins, 69th Regt.
3. Air Bladder of the Sturgeon. (Isinglass.) Col. Monins.
4. Teeth of the Sperm Whale. Mr. C. C. Stewart.
5. Deer Horns in the Velvet. Beverley Robinson, Esquire.
6. Book on Surgery, published in 1563, by Thomas Gale. Mrs. Paddock.
7. Book on Surgery, in German, published in 1684. Dr. Yates.
8. Bible of 1616, published in the Reign of James II. Mrs. Thomas Paddock.
9. Timber-head of the Royal George. Captain Davys.
0. Old Newspapers.
1. Biliary Calculus or Gall Stone, from the human liver. Dr. Livingstone.
2. Singular substance found on the Snow after a Fire at Gagetown. James White, Esquire, High Sheriff.
3. Perpetual Motion, as discovered by Mr. Richard M'Farlan.— Mr. M'Farlan.

2134. Antique Shoes. Mr. James Whitney.
 2135. Ammunition Box, with Cartridges, Powder, Shot, &c. of the celebrated William Cobbett. Mr. C. E. Ratchford.
 2136. Cap of the Natives of the Ascension Islands, Pacific Ocean. Mr. A. Coughlan.
 2137. Belt of the Natives of Ascension Islands, South Pacific Ocean. Mr. Seal, New Zealand.
 2133. Cloth and Weaving Apparatus of the Natives of Ascension Islands, South Pacific Ocean. Mr. A. Coughlan
 2139. } Dresses of the Natives of New Zealand. Mr. A. G. Crookshank.
 2140. }
 2141. Ancient Axe, dug from the ruins of a City of Ascension Islands, South Pacific Ocean. Mr. A. Coughlan.
 2142. Large Wasp's Nest. New Brunswick.
 2143. New Zealand Bag.
 2144. New Zealand Bow and Arrows. Mr. C. E. Ratchford.
 2145. War Club, from Islands of the Pacific Ocean. Mr. A. Jackson.
 2146. Madagascar Paddle. Mr. Crookshank.
 2147. Sword of the Natives of New Zealand. Mr. A. Jackson.
 2148. War Club. Madagascar. Mr. A. Jackson.
 2149. Great War Spear of the Natives of Society Islands, South Pacific Ocean. Mr. A. Coughlan.
 2150. Lance, from Ascension Islands. Mr. A. Jackson.
 2151. New Zealand Spear. Mr. A. G. Crookshank.
 2152. Do. do. Mr. A. Jackson.
 2153. Laumonite. Nova Scotia.
 2154. Horn of the Sea Unicorn. Mr. Lockhart.
 2155. Saw of the Saw-fish. South America.

INDIAN RELICS.

2156. Indian Beads and the Fur Grave Clothes of Indians, from the Oromocto. Henry T. Partelow, Esquire.
 2157. French Axes dug with relics of Indians at the Oromocto.
 2158. Copper Kettle of French Manufacture. It contained the skulls of two Indians.
 2159. Indian Stone Pot. M. H. Perley, Esquire.
 2160. Indian Stone Axes. Dr. M'ulloch.
 2161. Do. do. do. M. H. Perley, Esquire.
 2162. Do. Gouge. William Jack, Esquire.
 2163. Do. do. Mr. Jones.
 2164. Do. Spear Heads.
 2165. Do. Arrow Heads.
 2166. Do. Do. do.
 2167. Do. Pipe.
 2168. Do. Relic found among Indian Bones.
 2169. Do.
 2170. Cannon Balls found in the Rocks at Blowmedon, N. S.
 2171. Group of Crystals of Sulphate of Lime, from Sussex Vale, weighing 140 lbs. Mr. Hallett.
 2172. Locomotive Steam Engine.
 2173. Collection of ancient and other Coins.

r, Shot, &c. of the
E. Ratchford.
Islands, Pacific Ocean.

South Pacific Ocean.

Islands of Ascension
Coughlan

A. G. Crookshank.

Islands of Ascension Is-
lands, Coughlan.

Ratchford.

Mr. A. Jackson.

A. Jackson.

Islands, South Pa-

Jackson.

Island.

Indians, from the

Island of Oromocto.

Obtained the skulls

Island, N. S.

Island of Sussex Vale,



